

Minutes of the Project Approval Board (PAB) meetings held on the 5th February, 2015 and 17th April, 2015 for approval of Annual Work Plan & Budget 2015-16 of Karnataka under the Centrally Sponsored Scheme of the integrated Rashtriya Madhyamik Shiksha Abhiyan (RMSA).

Integrated RMSA PAB meeting to consider the Annual Work Plan & Budget 2015-16 under Rashtriya Madhyamik Shiksha Abhiyan (RMSA, including the components of ICT@ Schools, Girls' Hostels, Vocational Education and Inclusive Education for the disabled at Secondary Stage (IEDSS) for the State of Karnataka was held on the 5th February, 2015 and 17th April 2015 under the Chairperson Secretary (SE&L).

2. The list of participants who attended the meeting is attached at **Annexure-I**.

Rashtriya Madhyamik Shiksha Abhiyan (RMSA)

3. Secretary (SE&L) welcomed all the participants and in her opening remarks appreciated the efforts of the States and the overall progress under RMSA. While indicating to the current overall Spill over of ₹60540.573 (**Details at Annexure - V**) under non-recurring civil works, she expressed concern over the general backlog of civil works in State and slow progress in completing these works. This significantly limits the capacity of the State to upgrade new schools.

The Chairperson referred to the Swachh Vidyalaya initiative and State was also advised to ensure completion of all the toilets sanctioned under RMSA under new/upgraded Schools and under strengthening expeditiously. She also informed that the construction of toilet works approved during special PABs held in November-December, 2014 to fill up the gaps indicated as per UDISE 2013, for which the Central Share of non-recurring grant has already been released, has to be completed by the State by May, 2015. She advised that gaps of toilets, if any, in the government secondary schools, based on UDISE 2014, should be included by the States in their AWP&B proposals for 2015-16.

On interventions focused on quality, the Chairperson shared with the State the initiative being taken under Rashtriya Avishkar Abhiyan to focus on subjects of science and mathematics and the need for States to synergise and enhance their efforts towards impacting the overall quality of science and maths education in secondary schools including building capacity of maths and science teachers. Informing of NCERT's specific efforts in developing modules for teacher training in science and mathematics, she requested that States must utilize these in-service training resources to train its teachers.

The Chairperson also shared the initiative of 'Kala Utsav', a national event that would build on States' current activities to promote and encourage local Arts and cultural heritage amongst its students. This would be steered by NCERT in coordination with States and a specific line item with funds is being earmarked in the current Plan approvals. Detailed note on 'Kala Utsav' is being shared with States separately (**Annexure-VI**).

The Chairperson reiterated the need for States to ensure appointment of Secondary School Teachers with prescribed (by NCTE) qualifications only, as any gap in this regard is bound to have an adverse impact on the quality of secondary education. She noted that support under RMSA would be conditioned upon States' adherence to these basic norms.

It was informed that the NUEPA has developed a framework of national School Standards and Evaluation, that aims to bring out key facets of school standards, and its evaluation for further school improvement. Funds are being provisioned for a 3 day orientation workshop of educational administrators both at district and state level, on the framework and its implementation. NUEPA has been requested to develop a module that can be used by the States to conduct the orientation workshop. It is also important that selection of first set of these educational administrators for this workshop is done in a manner so as to ensure that they in turn are able to conduct further sensitization of their teams.

While expressing her concern over quality of inclusion the Chairperson emphasised the need for States to pay more attention to availability and support of special educators, identification of CWSN and focused support to their learning needs. Secretary (SE&L) also requested the State to extend full cooperation for conduct of the National Achievement Survey being conducted by the NCERT.

Ms. Radha S. Chauhan, Joint Secretary (SE-I) gave a detailed overview of the status of implementation, planning and monitoring of RMSA. The details are at **Annexure –II**.

4. Major highlights of the PAB include:-

- State has proposed 1674 schools for strengthening. Out of which 1537 schools (amounting of ₹554.08 Cr) are eligible and balance 137 schools are not eligible on the following grounds:
 - 1 school covered under New School RMSA
 - UDISE data not available for 1 school
 - Land not available for 4 schools, 119 schools are private schools and 119 schools in which Science lab status is not clear in UDISE 2014-15 data. List for Water and Ramps/railings not provided by the state. However, keeping in view the progress and spill-over of existing school (Rs 260 Cr) new proposal not approved
- Out of total 167 schools (29 in SFDs), out of which 45 Schools are eligible. And balance 113 schools do not qualify the norm of enrolment and in 9 schools state proposed to open with Urdu and Marathi medium under strengthening. Finally PAB approved and sanctioned 24 additional classrooms in 9 schools for starting Urdu and Marathi medium in the nearest secondary schools as per expected enrolment along with one language teacher.
- Low GAR:- Although the Gross Access Ratio at the state level 93.76%, but the Low GAR at the district Dharwad (49.45%) & Gadag (62.94%) have been observed which is an area of concern
- Percentage capacity utilization:- The secondary schools approved under RMSA have less than 100% capacity/efficiency in the state. The capacity utilization percentage in the state is 72%. It means that there is a scope of increasing enrolment in the RMSA schools.
- Out of total proposal, 112 schools are eligible having good enrolment, electricity and computer room. But keeping in view the slow progress of previous approval, new proposal not approved
- State has not transferred GOI releases (total of Rs. 301.16 Cr) to SIS account for the implementation of program.
- State is having total 42% Spill over (RMSA-51%)
- Financial progress in GH during 2014-15 is considerably low i.e. 26% (R-36%, NR-25%) out of available fund.
- Out of the total approved outlay of 815.57 crores, the state has managed to incur an expenditure of about Rs. 399.95 crores against the release of Rs. 402.81 crores.
- **250** pre-university colleges were approved for introduction of vocational education by the PAB for a total project cost of **₹17042.50 lakh** in 2012-13 in **four** trades ó

IT/ITeS, Retail, Security and Automobile. An amount of ₹4397.09 lakh (₹3679.34 lakh as non-recurring and ₹717.75 lakh as recurring)

- Consequent upon the revision of the scheme and non-implementation of the same by the State, the PAB for 2015-16 revised the total outlay as per the norms of the revised scheme. The revised approval is reflected in the costing sheet at **Annexure – III**. An amount of ₹3679.34 lakhs released under non-recurring head will be adjusted against future release.

5. Annual Work Plan and Budget for 2015-16:

Thereafter, the intervention-wise discussion was held and the following decisions were taken and approval accorded:

| S. N | Activities |
|-----------|-----------------------------------------------------------------------------------------------------------------------------------------------------------------------------------------------------------------------------------------------------------------------------------------------------------------------------------------------------------------------------------------------------------------------------------------------------------------------------------------------------------------------------------------------------------------------------------------------------------------------------------------------|
| I | NON RECURRING |
| A1 | The spill over of ₹60540.573 lakh on account of Civil Intervention sanctioned for new schools, strengthening, teacher quarter, girls hostel, and non-recurring component of ICT was approved. Detail is at Annexure-V . |
| 1. | <p>Non Recurring: (New Components)</p> <p>New Schools</p> <p>Out of total 167 schools (29 in SFDs), out of which 45 Schools are eligible and approved with two section a unit cost of ₹89.80 lakh with a total outlay of ₹4041.00 lakh. List of 45 schools are at Annexure-VII. The remaining 113 schools do not qualify the norm of enrolment and in 9 schools State proposed to open with Urdu and Marathi medium.</p> |
| 2. | <p>Strengthening of existing schools</p> <p>State has proposed 1674 schools for strengthening. Out of which 1537 schools (amounting of ₹ 554.08 Cr) are eligible and the remaining 137 schools are not eligible but due to huge spill over no fresh financial support is approved but PAB on 17th April 2015 approved and sanctioned 24 additional classrooms in 9 schools @₹ 9.50 lakh per classroom with a total outlay of ₹228.00 lakh for starting Urdu and Marathi medium in the nearest secondary schools as per expected enrolment along with one language teacher. List of 9 schools are at Annexure-IX.</p> |
| 3 | The PAB approved the total revised non-recurring outlay ₹ 6482.50 lakh (₹ 4528.497 lakh for Workshop/Laboratory and ₹ 1954.00 lakh for tools, equipments and furniture-Details costing at Annexure-XII) for 250 schools as per the norms of the |

| | |
|-----------|-----------------------------------------------------------------------------------------------------------------------------------------------------------------------------------------------------------------------------------------------------------------------------------------------------------------------------------------------------------------------------------------------------------------------------------------------------------------------------------------------------------------------------------------------------------------------------------------------------------------------------------------------------------------------------------------------------------------------------------------------------------------------------------------------------------------------------------------------------------------------------------------------------------------------------------------------------------------------------------------------------------------------------------------------------------------------------------------------------------------------------------------------------------------------------------------------------------------------------------------------------------------------------------------------------------------------------------------------------------------------------------------------------------------------------------------------------------------------------------------------------------------------------------------------------------------------------------------------------------------------------------------------------------------------------------------------------------------------------------------------------------------------------|
| | revised scheme of Vocationalisation of Secondary and Higher Secondary Education. An amount of Rs. 3679.34 lakhs has already been released under non-recurring head which will be adjusted against future releases. As per the UDISE data, out of 250 schools, 239 are composite schools (Annexure-IX), 19 are only Secondary schools with PU college in the same premises (Annexure X) and 11 are non-composite (Annexure XI). The State needs to clarify the issue. |
| II | <u>RECURRING</u> |
| 1 | Salary |
| | <p>1.1 The PAB approved salary of 235 headmasters (as per UDISE) @₹ 32775/ (Initial pay-₹ 22800 + DA@28.75% ₹6555 + HRA@15% ₹3420)- per month for 12 months with a total outlay of ₹924.25 lakh.</p> <p>1.2 The PAB approved salary of 1774 subject teacher (as per UDISE) @Rs.25372/ (Initial pay- ₹17650 + DA@28.75% ₹ 5074 + HRA@15% ₹2648)- per month for 12 months with a total outlay of ₹ 5401.19 lakh.</p> <p>1.3 The PAB approved (5+1) subject teachers including headmaster/per school for newly approved 45 schools. Financial support will be supported after recruitment of these teachers.</p> <p>1.4 The PAB approved flexible pool for engaging resource persons under VE @₹ 7.25 lakh/school for 250 schools with a total outlay of ₹1812.50 lakh.</p> <p>1.5 The State Government has submitted the list of 30 special education teachers and the State Government has committed to recruit 50 more special education teachers till March, 2015. Therefore, the PAB approved the salary of 80 (30+50) special education teachers @₹ 20,000/- per month for 12 months with a total outlay of ₹ 192.00 lakh subject to furnish the list of newly recruited of 50 special education teachers with their names, date of appointment, age qualification, RCI no., school where these teachers are posted along with UDISE code etc.</p> <p>1.6 The PAB also approved the special pay for 80 special education teachers @₹ 400/- per month for 12 months with a total outlay of ₹ 3.84 lakh subject to furnish the list of newly recruited of 50 special education teachers with their names, date of appointment, age qualification, RCI no., school where these teachers are posted along with UDISE code etc.</p> |
| 2 | Teacher Training |
| | 2.1 The PAB approved in service training for existing teachers including teaching |

| | |
|----------|-------------------------------------------------------------------------------------------------------------------------------------------------------------------------------------------------------------------------------------------------------------------------------------------------------------------------------------------------------------------------------------------------------------------------------------------------------------------------------------------------------------------------------------------------------------------------------------------------------------------------------------------------------------------------------------------------------------------------------------------------------------------------------------------------------------------------------|
| | <p>headmaster for 44054 teachers (26432 teacher in Government secondary schools and 17622 teachers in Government aided secondary schools) @ ₹300/- per day for 10 days with total outlay of ₹1321.62 lakh is approved.</p> <p>2.2 The PAB approved training of 840 Master Resource Persons (MRPs) @ ₹300/- per MRP for 5 days with a total outlay of ₹ 12.60 lakh</p> <p>2.3 The PAB approved professional development for school leadership program for 200 Headmasters of government secondary schools @₹ 300/- per day for 16 days with a total outlay of ₹ 9.60 lakh</p> <p>2.4 Training of SMDC members : As per UDISE, two day training of 12730 members in 2546 Government standalone school (@5 members per school) approved @ ₹300/- per day for 2 days with a total outlay of ₹76.38 lakh.</p> |
| 3 | School Grant |
| | 3.1 The PAB approved 5103 Government secondary school @₹ 0.50 lakh per school with a total outlay of ₹ 2551.50 lakh. |
| 4 | Recurring grant for Vocational Education |
| | <p>4.1 The PAB approved recurring Grant for 250 schools for implementing VE @ ₹ 70,000/- per school for raw material, maintenance of tools with a total outlay of ₹ 175.00 Lakh.</p> <p>4.2 The PAB approved recurring Grant for VE in 250 schools @ ₹ 1.00 lakh per school for office expenses/ contingency with a total outlay of ₹ 250.00 lakh.</p> <p>4.3 The PAB approved recurring grant for VE in 250 schools for hand on skill training to students in industry @ ₹ 0.375 lakh per school with a total outlay of ₹ 93.75 lakh.</p> <p>4.4 The PAB approved recurring grant in 250 schools for cost of assessment and certification @ ₹0.30 lakh per school with a total outlay of ₹75.00 lakh.</p> |
| 5 | Recurring grant for Girls Hostel |
| | 5.1 Recurring grant for 62 functional girls hostels with enrolment of 2981 girls approved for a total outlay of ₹643.69 lakh. |
| 6 | Recurring grant for IEDSS |
| | 6.1 Support to 10156 CWSN (excluding 868 CWSN with learning disability) under Student Oriented Component approved @ ₹3000/- per CWSN with a total outlay of ₹ 304.68lakh. |

| | |
|-----------|---------------------------------------------------------------------------------------------------------------------------------------------------------------------------------------------------------------------------------------------------------------------------------------------------------------------------------------------------------------------------------------------------------------------------------------------------------------------------------------------------------------------------------------------------------------------------------------------------------------------------------------------------------------------------------------------------------------------------------------------------------------------------------------------------------------------------------------------------------------------------------------------------------------------------------------------------------------------------------------------------------------------------------------------------------------------------------------------------------------------------------------------------|
| | <p>6.2 Orientation of Principals, Educational administrators, parents/ guardians etc. for 4538 Members at @ ₹ 300/- per members for 2 days with the total outlay of ₹ 27.23 lakh.</p> |
| 7 | <p>Project on science and Maths promotion</p> |
| | <p>7.1 The PAB approved ₹ 3.75 lakh (Rs. 2.75 lakh at Taluk level and Rs. 1 lakh at the State level for 22 groups) to organize science fairs and metric mela for mathematics together under the project to encourage science and Mathematics teaching and learning process (class IX and X standard).</p> <p>7.2 The PAB approved to develop the school information system in 100 schools @ ₹20,000/- per school across 4 district with a total outlay of ₹ 20.00 lakh on pilot basis.</p> |
| 8 | <p>Project to promote Art/Culture</p> |
| | <p>8.1 The PAB approved to conduct the self defence training for girls students at the secondary level in 4718 Government secondary schools (for 178981 girls students of class IX) @ ₹4500/- per school with a total outlay of ₹ 212.31lakh.</p> <p>8.2 Kala Utsav (Aao Virse nu Janniye) :- The PAB approved a total outlay of ₹ 10.00 lakhs for promoting and encouraging students to learn and practice local art forms- mainly music, dance and theatre in schools. Such talents, preferably group presentations may then be showcased and awarded at State level. Annual National events will be held to celebrate and award such talents and the initiative will be guided and coordinated by the NCERT.</p> <p>The other activities proposed by the State like Kalajatha, Girl Start programme etc. may be clubbed within this project. The achievement of the project will be measured against:</p> <p>(i) Students to learn and perform local arts</p> <p>(ii) Participation of number of students and schools.</p> <p>Generating awareness among society about Utsav and extent of association of society therewith.</p> |
| 9. | <p>MMER</p> |
| | <p>9.1 MMER has been approved @ 3.5% of with total financial implication of ₹ 870.53 lakh.</p> |

6. The Status of financial details including committed liabilities of the previous years and spill- over thereof, new approvals for recurring and non-recurring nature against the proposals of the State are summarized in the following table:

₹ In lakh

| S.No. | Scheme | Approved for 2015-16 | | | Spill over | Total Budget |
|-------|-----------------------------------------|----------------------|-----------------|-----------------|-----------------|-----------------|
| | | Non Recurring | Recurring | Total | | |
| 1 | RMSA including MMER in recurring | 4269.00 | 11413.73 | 15682.73 | 41562.21 | 57244.94 |
| 2 | IEDSS | 0.00 | 527.75 | 527.75 | 142.80 | 670.55 |
| 3 | <u>ICT@school</u> | 0.00 | 0.00 | 0.00 | 11295.10 | 11295.10 |
| 4 | Girls Hostel | 0.00 | 643.68 | 643.68 | 7540.46 | 8184.14 |
| 5 | Vocational Education | 6482.50 | 2406.25 | 8888.75 | 0.00 | 8888.75 |
| | Total | 10751.50 | 14991.41 | 25742.91 | 60540.57 | 86283.48 |

- The cost sheet indicating the component wise approval for RMSA is at **Annexure-III**.
7. The other components proposed by the State were considered and not approved by the Board (details at **Annexure-IV**).
8. The PAB brought the following points to the notice of Secretary (Education), Karnataka and requested for corrective action:
- (i) Large backlog of the incomplete Civil Works must be completed and monitored regularly.
 - (ii) State needs to conceptualize and create the necessary facilitative changes to ensure that vocational education component of RMSA in secondary/senior secondary school provides a viable option to students.
 - (iii) Emphasis should be given to quality learning outcomes through timely recruitment of teachers against vacancies, optimal use of teachers training for science and mathematics where linkages with good resource person from higher education institutions should be drawn upon and to facilitate the completion of NAS for class X being conducted by NCERT.
 - (iv) The CTEs, SCERTs & DIET must be used for conduct of in service teacher training of secondary school teachers also.
 - (v) Karnataka needs to conceptualize and avail the Module regarding guidance of Adolescence which is available in the website of NCERT.

- (vi) Education Secretary, Karnataka should regularly review expenditure and release of funds to schools/field under RMSA as well as receipts from Govt. of India and State Govt. to improve fund flows in the programme.
- 9.** The release of funds to different schemes will be further guided by the following conditions:
- (i) The State/UT Administration shall give a written commitment for meeting its share of the RMSA, ICT@ school, IEDSS, Girls Hostel & Vocational Education of the budget approved according to prescribed sharing pattern of the schemes.
 - (ii) SMDCs or equivalent bodies should be constituted and accounts opened to incur expenditure under school grant, minor repair, civil works, and other such expenditure, which have to be incurred only through these bodies as per RMSA norms.
 - (iii) The State Government will maintain their level of investment in Secondary education as in 2009-10 and give the details of this to GOI before the release of second
 - (iv) The second installment would only be released after (a) the proportionate installment of State/UT share has been released, (b) at least 50% expenditure against available funds has been incurred, (c) utilization certificate has been submitted for funds released in the year 2013-14 and (d) Audit Reports have been submitted for the year 2014-15.
- 10.** The meeting ended with a vote of thanks to the Chair.

List of Participants - 05.02.2015

1. Ms. Vrinda Sarup
Secretary, SE&L, MHRD
Chairperson
2. Ms. Radha S. Chauhan
Joint Secretary, Secondary Education-1, MHRD
3. Mr. Sushil Bhushan
Under Secretary, RMSA-IV/ VE, MHRD

Representatives from the State of Karnataka

1. Sri Mohamed Mohsin CPI
2. Sri Adonisyedsaleem SPD SSA & RMSA
3. Sri Jayakumar Director DSERT
4. Mr. M. Shanmugam, Consultant (Civil), RMSA
5. Sri Purushothaam Special officer VOE
6. Sri Manjunath PO RMSA
7. Purushothama Kumar PO SSA & RMSA
8. Nagesh SSA & RMSA

Representative of other Organization

1. Prof. Ranjana Arora, Head RMSA Cell, NCERT

All consultant, TSG-RMSA

List of Participants - 17.04.2015

1. Ms. Vrinda Sarup
Secretary, SE&L, MHRD
Chairperson
2. Mr. J. Alam
Joint Secretary, Secondary Education-1, MHRD
3. Dr. Suparna S. Pacuhori
Director, RMSA-IV/EFA, MHRD
4. Mr. Sushil Bhushan
Under Secretary, RMSA-IV/ VE, MHRD

Representatives from the State of Karnataka

5. Dr. Raj Kumar Khatri, Principal Secretary (Education)
6. Sri Adonisyedsaleem SPD SSA & RMSA
7. Sri Jayakumar Director DSERT
8. Mr. M. Shanmugam, Consultant (Civil), RMSA
5. Sri Purushothaam Special officer VOE
6. Sri Manjunath PO RMSA
7. Purushothama Kumar PO SSA & RMSA
8. Nagesh SSA & RMSA

All consultant, TSG-RMSA

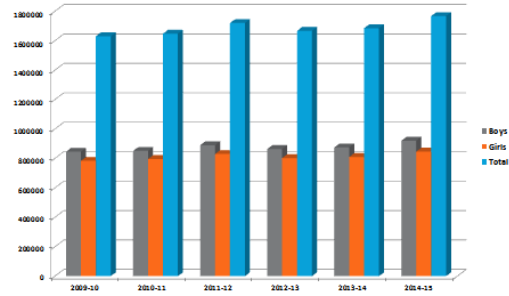
**RASHTRIYA MADHYAMIK SHIKSHA
ABHIYAN**

APPRAISAL NOTE FOR ANNUAL WORK PLAN & BUDGET
FOR THE YEAR 2015-16 ON
EDUCATIONAL INDICATORS

KARNATAKA

DEPARTMENT OF SCHOOL EDUCATION &
LITERACY MINISTRY OF HUMAN RESOURCE
DEVELOPMENT GOVERNMENT OF INDIA

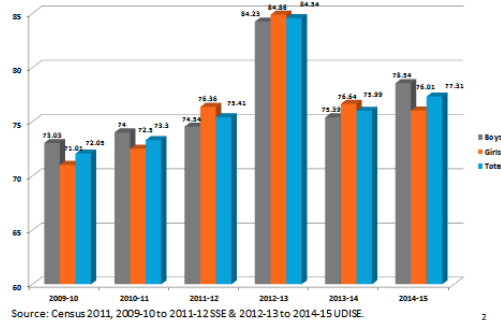
Enrolment (Secondary level)



Source: 2009-10 to 2011-12 SSE & 2012-13 to 2014-15 UDISE.

1

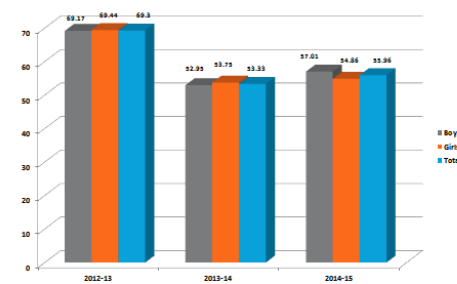
Gross Enrolment Ratio (Secondary level)



Source: Census 2011, 2009-10 to 2011-12 SSE & 2012-13 to 2014-15 UDISE.

2

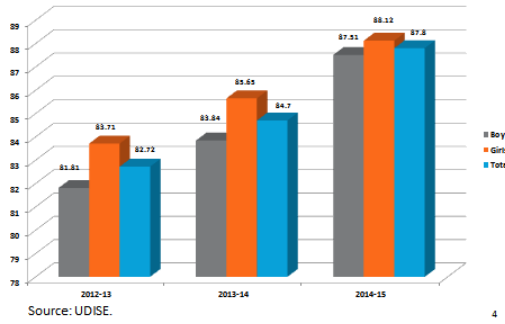
Net Enrolment Ratio (Secondary level)



Source: Census 2011 & UDISE.

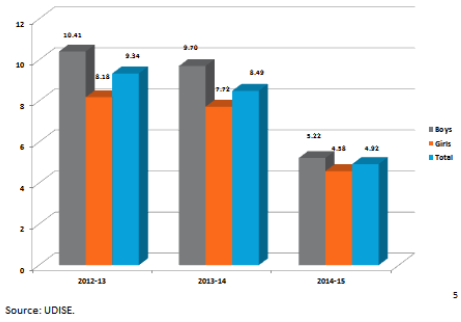
3

Retention Rate (Secondary level)



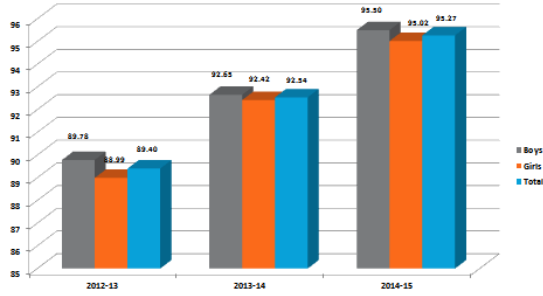
4

Drop-out Rate (Secondary level)



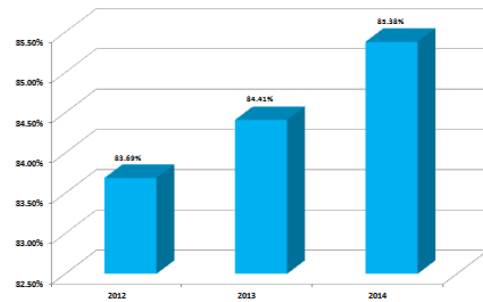
5

Transition Rate:- (Class VIII to IX)



6

Pass Percentage Class X



6

Annexure-III

State: Karnataka

₹ in lakh

| S. No. | Activities | Approved for 2015-16 | | |
|----------|------------------------------------------------------------------------------|----------------------|----------------------------|-----------------|
| | | Unit Cost | Phy | Fin |
| A | Non-Recurring | | | |
| 1 | New schools | | | |
| 1.2 | 2 section school | 89.80 | 45 | 4041.00 |
| 2 | Strengthening of Schools | | 9 | |
| 2.1 | Additional classrooms (24 ACR in 9 schools) | 9.50 | 24 | 228.00 |
| 3 | Revised non-recurring grant for VE in 250 schools | | As per Annexure-XII | 6482.50 |
| | Sub-Total (A) (Non-recurring) | | | 10751.50 |
| B | Recurring | | | |
| 4 | Teachers' Salary | | | |
| 4.1 | Headmaster (12 months) | 0.32775 | 235 | 924.25 |
| 4.2 | Subject teacher (12 months) | 0.25372 | 1774 | 5401.19 |
| 4.3 | Teachers including headmaster for newly approved 45 schools | | 270 | 0.00 |
| 4.4 | Flexible Pool for engaging resource persons(VE) | 7.25 | 250 | 1812.50 |
| 4.5 | Special Education Teacher (12 months) (IEDSS) | 0.20 | 80 | 192.00 |
| 4.6 | Special Pay of special education teachers (12 months) (IEDSS) | 0.004 | 80 | 3.84 |
| | Subtotal | | | 8333.78 |
| 5 | Teacher Training | | | |
| 5.1 | In-service training for existing teachers including teaching HMs | 0.03 | 44054 | 1321.62 |
| 5.2 | Training of Master resource persons | 0.015 | 840 | 12.60 |
| 5.3 | Professional Development Program of Head Master | 0.048 | 200 | 9.60 |
| 5.4 | Training of SMDC members | 0.006 | 12730 | 76.38 |
| | Subtotal | | | 1420.20 |
| 6 | Recurring grant | | | |
| 6.1 | School grant (RMSA) | 0.50 | 5103 | 2551.50 |
| | Sub-Total | | | 2551.50 |
| 7 | Recurring grant for VE | | | |
| 7.1 | Grant to schools implementing VE for Raw Materials, maintenance of tools etc | 0.70 | 250 | 175.00 |
| 7.2 | Office expenses/contingencies | 1.00 | 250 | 250.00 |
| 7.3 | Hands on skill training to students in industry | 0.375 | 250 | 93.75 |
| 7.4 | Cost of Assessment and Certification | 0.30 | 250 | 75.00 |
| | Subtotal | | | 593.75 |
| 8 | Recurring grant for GH | | | |
| 8.1 | Fooding/lodging for girls | 0.015 | 2981 | 447.15 |
| 8.2 | Honorarium of warden (in addition to their salary as teacher) | 0.05 | 62 | 31.00 |
| 8.3 | Chowkidar | 0.03 | 62 | 18.60 |

| | | | | |
|-----------|------------------------------------------------------------------------------|---------|-------|-----------------|
| 8.4 | 1 Head cook & 2 Astt. Cook | 0.605 | 62 | 37.51 |
| 8.5 | Electricity/water per year | 0.05 | 62 | 31.00 |
| 8.6 | Maintenance per year | 0.00366 | 2981 | 10.91 |
| 8.7 | Medical care | 0.0075 | 2981 | 22.36 |
| 8.8 | Toiletries & sanitation | 0.001 | 2981 | 29.81 |
| 8.9 | News paper/Magazines & sports | 0.002 | 2981 | 5.96 |
| 8.1 | Miscellaneous | 0.01514 | 62 | 9.39 |
| | Sub-total | | | 643.68 |
| 9 | Recurring grant for IEDSS | | | |
| 9.1 | Students oriented activities for CWSN | 0.03 | 10156 | 304.68 |
| 9.2 | Orientation of Principals, Educational administrators, parents/guardians etc | 0.01 | 4538 | 27.23 |
| | Sub-Total | | | 331.91 |
| | | | | |
| 10 | Promotion of Science and Math | | | |
| 10.1 | Science fair cum matric mela | | | 3.75 |
| 10.2 | School information system (Pilot on 4 districts) | 0.20 | 100 | 20.00 |
| | Sub total | | | 23.75 |
| 11 | Project on Promotion of Art and Culture | | | |
| 11.1 | Self Defence Training For Girls | 0.05 | 4718 | 212.31 |
| 11.2 | Kala Utsav | | | 10.00 |
| | Subtotal | | | 222.31 |
| | Total Recurring (B) | | | 14120.88 |
| | MMER@3.5% | | | 870.53 |
| | Total Recurring including MMER | | | 14991.41 |
| | Total Non-recurring (A) | | | 10751.50 |
| | Total approved outlay (Recurring + Non-recurring) | | | 25742.91 |

Components not approved

₹ in lakh

| Sl.No | Components | Proposal | | Recommend | | Remarks |
|----------|-----------------------------------------------------------------------------|----------|----------------|-----------|------------|------------------------------------------------------------------------------------------------------------------------------------------------------------------------------------------------------------------------------------------------------------------------------------------------------------------------------------------------------------------------------------------------------|
| | | Phy | Fin | Phy | Fin | |
| | Non-Recurring | | | | | |
| 1 | Strengthening | 1674 | 80602.2 | 1537 | 0.00 | As per UDISE, eligible schools are 1537 (amounting Rs 554.08 Cr). keeping in view the progress and spill over of existing school (Rs 260 Cr) new proposal may not be considered. |
| 2 | Major repair | 212 | 848.0 | 0 | 0 | School wise list, estimates, other requisite information not submitted. Hence, not considered |
| 3 | Non recurring for ICT | 561 | 3590.4 | 0 | 0 | Out of total proposal,112 schools are eligible having good enrolment electricity and computer room. But keeping in view the progress of previous approval, new proposal may not be considered. PAB may take a view on it |
| | Subtotal | | 85040.6 | | 0.0 | |
| | Recurring | | | | | |
| 4 | Project on IT | | | | | |
| 4.1 | ABTC (Active Basic Technology Course) | 1151 | 186.9 | | | Details not available in the plan for ABTC. In the plan, state has proposed Rs 11 lakh (page No. 390-394) for Tele-Education program which is for providing laptops, textbooks, generators, DVDs, Refreshment, Awareness Programme etc which state can continue the initiative on its own however the initiative can also be merged with ICT@school scheme. . Hence, the proposal is not considered. |
| 5 | Project on promotion of Science and maths & Learning enhancement | | | | | |
| 5.1 | Science symposium | 194 | 17.1 | | | Since state is proposing regular activities in this project so it is to be converged with Project A. Hence,not considered |
| 5.2 | Drama | 19 | 12.8 | | | |
| | Subtotal | | | | | |
| | Other recurring activities | | | | | |
| 6 | Minor Repair | 3994 | 998.5 | 0 | 0.00 | State bear the fund for Minor repair |
| 7 | Recurring grant for ICT for 2014-15 | 960 | 1993.5 | 0 | 0.00 | Since is proposing fresh recurring budget for new schools which is not considered. |
| 8 | Teachers & HMs for newly | 1002 | 317.3 | 0 | 0.00 | Subject to approvals of New Schools and recruitment of teachers |

| | | | | | | |
|----|-----------------------------------------------|------|----------------|---|------------|-----------------------------------|
| | proposed 167 schools | | | | | |
| 9 | Support for 'Lab Attendant | 399 | 2154.6 | 0 | 0.00 | Stands revoked in last PAB |
| 10 | Support for office Assistant' | 2300 | 10235.0 | 0 | 0.00 | |
| 11 | Computer Teachers for schools for ICT covered | 399 | 478.8 | 0 | 0.00 | Not covered in the existing norms |
| | subtotal | | 16177.7 | | 0.0 | |

Spill over

₹ in lakh

| Activity | | Budget Approved (Cumulative) | | Cumulative Progress (Since Inception Till Current Year) | | | Spill Over | |
|----------------------------------------------------|-------------------------------------------------|---------------------------------|----------|------------------------------------------------------------|-----------------|-------------------------------|------------|------------------|
| | | Phy | Fin | Physical | | Financial (Rs. in Lacs) | | |
| | | | | Comp | In- progress | | | |
| RMSA | | | | | | | | |
| A | New Schools / Upgraded Schools | | | | | | | |
| | 1 | 1 Section School | 24 | 1375.94 | 0 | 9 | 232.37 | 1143.570 |
| | 2 | 2 Section School | 375 | 23710.30 | 11 | 274 | 9478.47 | 14231.830 |
| | Total for New Schools / Upgraded Schools | | 399 | 25086.24 | 11 | 283 | 9710.84 | 15375.400 |
| B | Strengthening of Existing Schools | | | | | | | |
| | 1 | Additional Classroom | 3236 | 18239.24 | 174 | 3062 | 10012.96 | 8226.279 |
| | 2 | Boys Toilet (Swachh Vidyalaya) | 87 | 154.86 | 0 | 87 | 154.86 | 0.000 |
| | 3 | Girls Toilet (Swachh Vidyalaya) | 17 | 30.26 | 0 | 17 | 30.26 | 0.000 |
| | 4 | Science Lab | 1649 | 10058.90 | 118 | 1531 | 5542.06 | 4516.842 |
| | 5 | Lab Equipment (Sci Lab) | 1649 | 1649.00 | 0 | 1 | 2.05 | 1646.950 |
| | 6 | Computer Room | 659 | 3295.00 | 36 | 623 | 2721.53 | 573.470 |
| | 7 | Art/Craft Room | 1786 | 8930.00 | 130 | 1656 | 4920.08 | 4009.920 |
| | 8 | Toilet Block | 1303 | 1738.00 | 174 | 1129 | 230.68 | 1507.322 |
| | 9 | Library Room | 1725 | 12075.00 | 122 | 1603 | 6652.85 | 5422.149 |
| | 10 | Drinking Water | 1128 | 129.00 | 174 | 954 | 17.12 | 111.879 |
| Total for Strengthening of Existing Schools | | 13239 | 56299.26 | 928 | 10663 | 30284.45 | 26014.811 | |
| D | Repairing and Renovations | | | | | | | |
| | 1 | Major Repair | 113 | 172.00 | | | | 172.000 |
| | Total for Repairing and Renovations | | 113 | 172.00 | | | | 172.000 |

| Activity | | Budget Approved (Cumulative) | | Cumulative Progress (Since Inception Till Current Year) | | | Spill Over | |
|------------------------|--------------------------------|---------------------------------|-----------|------------------------------------------------------------|-----------------|-------------------------------|------------------|-----------|
| | | Phy | Fin | Physical | | Financial (Rs. in Lacs) | | |
| | | | | Comp | In- progress | | | |
| Total for RMSA | | 13751 | 81557.50 | 939 | 10946 | 39995.29 | 41562.211 | |
| ICT | | | | | | | | |
| B | Boot Model | | | | | | | |
| | 5 | Boot Model (old) | 7155 | 47938.50 | 2759 | 4396 | 36643.4 | 11295.100 |
| | Total for Boot Model | | 7155 | 47938.50 | 2759 | 4396 | 36643.4 | 11295.100 |
| Total for ICT | | 7155 | 47938.50 | 2759 | 4396 | 36643.4 | 11295.100 | |
| IEDSS | | | | | | | | |
| A | Non-Recurring | | | | | | | |
| | 2 | Equipment for Resource Room | 202 | 141.40 | | | | 141.400 |
| | 7 | Non-Recurring(old) | 0 | 1.40 | | | | 1.400 |
| | Total for Non-Recurring | | 202 | 142.80 | | | | 142.800 |
| Total for IEDSS | | 202 | 142.80 | | | | 142.800 | |
| GH | | | | | | | | |
| A | Non-Recurring | | | | | | | |
| | 1 | Civil Works | 74 | 15716.87 | 11 | 51 | 8176.41 | 7540.462 |
| | Total for Non-Recurring | | 74 | 15716.87 | 11 | 51 | 8176.41 | 7540.462 |
| Total for GH | | 74 | 15716.87 | 11 | 51 | 8176.41 | 7540.462 | |
| Total | | 21182 | 145355.67 | | | 84815.10 | 60540.573 | |

Note for promotion of Performing Arts in Secondary Schools and showcasing as a national annual event – Kala Utsav

õRashtriyaMadhyamikShiksha Mission recognizes the importance of aesthetics and artistic experiences for secondary level children, especially in view of the role that such experiences can play in creating awareness of India's cultural heritage and its vibrant diversity.

In the context of education of arts (music, theatre, visual arts and dance) and heritage crafts, the Mission is guided by the recommendations of the National Focus Groups on these subjects and the report of the CIBE Committee on Culture. The syllabus for arts developed by NCERT should be followed and teachers who have been appropriately trained should be appointed for art education. Art is to be treated as a part of the curriculum and not as an extra-curricular activity. As recommended by NCF-2005, art education must become both a tool for the enrichment of learning in all subjects, and also as a subject in its own which is taught in every school up to class X and facilities for the same may be provided in every school.õ (RMSA Framework)

Performing arts have a key place in this context, especially when there is an attempt to bring together the mind and the body, aesthetically while imbibing and carrying forward the rich and great art forms of this diverse country.

In the six years of RMSA implementation, few States/UTs have been organizing Annual Art and Literary Competitions and Festivals at the School, District and State/UT level. Such an initiative in Kerala (Kalloltasavam), includes promotion of Classical Dance forms of Kuchipuddi, Monhiniattam, kathakali, Bharatnatyam, as well as traditional performing arts like Thiruvathirakali, Oppana, Margamkali, Yakshaganam, Instrumental classical and folk music, etc. In addition, literary activities like Story Writing, Art Competition (Drawing and Painting) are also held, in which outstanding and high quality performances are selected for competing at a higher level, ending with the selection of the best performances at the State/UT level during the week long School Art Festival.

Kala Utsav :

With the objective of encouraging such initiatives across all States/UTs and to promote and showcasing such promising talents at the National stage, an annual event at the National level, Kala Utsavis proposed to be organised. The event shall focus on performing arts ó dance, music and theatre.

This event will be the culmination of activities that will begin with schools conducting and identifying talents to represent it at District level, and the District to the State/UT.

The shortlisted schools will represent States/UTs at the National event and exhibit their talent in three main art forms: Dance, Music and Theatre. Since it is a school based activity, focus and preference will be for group presentations, over individual talents.

Implementation

As part of the RMSA interventions, States/UTs shall be supported (through NCERT), in

- (i) Organizing, and managing activities including competitions at the district and State/UT level
- (ii) Develop, nurture and showcase such talents in Govt. Secondary and Higher Secondary Schools
- (iii) The District/State/UT/National competition may be structured as a performing art festival which include workshops, live performances etc.

KALASHAALA SAMMAN

Annual KALA UTSAV to be held preferably in January would entail States/UTs planning their calendar of events accordingly so that they work towards short listing entries to national event by November of every Year. Since this would need continuous support and follow up NCERT would anchor this event as a project under the RMSA, and all funds earmarked for this can be transferred to NCERT for coordination with States/UTs.(similar to National Science Exhibition that NCERT coordinates.)

Each winning State/UT School will be awarded Rs 5 lakhs for First prize, Rs 3 Lakhs for Second prize and Rs. 2 lakhs for Third prize. The award categories shall include (i) innovative acts, (ii) endangered / dying art form, (iii) performance by especially abled students among other categories of arts. The prize will also recognize the students and teachers who have demonstrated outstanding achievement in the areas. The national prize shall include a short summer workshop at premier institution under tutelage of leading artist for winning performers in addition to monetary prizes.

At the State/UT level, Rs. One lakh would be allocated to be given away to the Best School in Performing Arts during the year.

The School would decide how to award the students and teacher/s in recognition of their achievement and effort.

Selection

The initial selection shall be made at the District level by a District Committee from amongst the schools selected by the District Committee, on the parameters outlined. The parameters for number of entries at each level, winning entries / eligibility of schools etc. are being worked out by NCERT and shall be shared with the States / UTs shortly.

The State/UT Selection Committee shall scrutinize and shift the recommendations of the District Committee and select the schools from among the selected/recommended schools sent by the Districts for the State/UT level Award and the State/UT entry to the Central Selection Committee for further consideration for National level Award.

The State/UT Level Committee may consist of the Commissioner/ Director of Education or Commissioner/ Director of Public Instructions as Chairman, Head of SCERT as Member Secretary, and an Expert / Experts as Member/ Members. The Secretary (Secondary Education) will scrutinize the selection and forward the same to Department of Art Education, NCERT, New Delhi.

NCERT, New Delhi, will organize a National Level School Art Festival, which would serve as a forum to show case the short listed entries/ performance and from which the Selection Committee / Jury would then select the winners.

The composition of the Committee will be as follows:

Chairman Director NCERT

Expert Members (3) (Music, Dance, Theatre) (to be finalized by director NCERT) Head, Department of Art Education, NCERT ó

Member Secretary

Financial implication:

State/UT support will be provided as part of Annual Plan proposal and under Quality interventions. Arts & Crafts is an existent item of intervention, where States/UTs have been provided funds for similar activities. This year States/UTs shall be requested to ensure that this is incorporated in their Annual proposals.

The total projected cost at national level would be around Rs. 1.00 Crore. As per details given below:

| | | |
|--------------|-----------------------------------------------------------------------------------------------------------------------------------|-------------|
| (i) | State/UT level Award for Best School @Rs 1 lakh per State/ UT (Allocation to State/UT) | 36.00 |
| (ii) | Advertisement announcing the competition (Allocation to NCERT) | 3.00 |
| (iii) | Pre ó Contest Activities | 3.00 |
| (iv) | Expenditure by the Selection Committee (Allocation to NCERT) | 2.00 |
| (v) | To and fro fare by train and boarding and lodging for Students / teachers of shortlisted schools (entries) (Allocation to NCERT) | 40.00 |
| (vi) | Cost of the Three Prizes @ Rs 5 lakhs, Rs 3 lakhs and Rs 2 lakhs, to be given as award (Allocation to NCERT) | 10.00 |
| (vii) | Cost of booking of venue (Allocation to NCERT) | 2.00 |
| (viii) | Misc. expenditure (cost of printing certificates, etc) Allocation to NCERT) | 4.00 |
| Total | | 1.00 |

| List of approved 45 New Secondary School (2 section) in the Year- 2015-16, Karnataka | | | | | |
|---------------------------------------------------------------------------------------------|-------------------|-------------------|-------------------------------------------------|----------------------------|------------------------|
| Sl. No | District | Block Name | Name of the UPS, which has been approved | Existing UDISE Code | No. of sections |
| 1 | BAGALKOT | BADAMI | GOVT HPS KOTEKAL | 29020109201 | 2 |
| 2 | BAGALKOT | BILAGI | GOVT HPS TOLAMATTI | 29020606101 | 2 |
| 3 | BANGALORE U NORTH | NORTH1 | GHPS KANNA HALLI | 29280202601 | 2 |
| 4 | BANGALORE U SOUTH | ANEKAL | GHPS CHANDAPURA (CHATRAKHANI) | 29200407401 | 2 |
| 5 | BANGALORE U SOUTH | ANEKAL | GHPS KOODLU | 29200412801 | 2 |
| 6 | BELGAUM CHIKKODI | ATHANI | K.H.P.S. KIRANGI | 29300103801 | 2 |
| 7 | BELGAUM CHIKKODI | CHIKODI | K.H.P.S. JAGANUR | 29300505501 | 2 |
| 8 | BELGAUM CHIKKODI | CHIKODI | K.H.P.S. MEERAPURHATTI | 29300509701 | 2 |
| 9 | BELGAUM CHIKKODI | CHIKODI | K.H.P.S. UMARANI | 29300513001 | 2 |
| 10 | BELLARY | BELLARY EAST | GHPS SINDHIGERI | 29120907601 | 2 |
| 11 | BELLARY | HOSPET | GHPS DEVALAPUR HPT | 29120501402 | 2 |
| 12 | BELLARY | HOSPET | GHPS GUNDA | 29120504701 | 2 |
| 13 | BELLARY | KUDLIGI | GHPS CHIRABI | 29120601501 | 2 |
| 14 | BELLARY | KUDLIGI | GHPS SIVAPURA | 29120607204 | 2 |
| 15 | BELLARY | SANDUR | GHPS NIDAGURTHI | 29120703802 | 2 |
| 16 | BELLARY | SIRUGUPPA | GHPS ARALIGANUR | 29120800401 | 2 |
| 17 | BELLARY | SIRUGUPPA | GHPS BHYRAPURA | 29120801501 | 2 |
| 18 | BELLARY | SIRUGUPPA | GHPS HAGALUR HOSALLI | 29120802701 | 2 |
| 19 | BELLARY | SIRUGUPPA | GHPS HERKAL | 29120803201 | 2 |
| 20 | BELLARY | SIRUGUPPA | GHPS S.W.S. KOTEHAL SUGUR | 29120804402 | 2 |
| 21 | BELLARY | SIRUGUPPA | GHPS KUDADHARAHAL | 29120804601 | 2 |
| 22 | BELLARY | SIRUGUPPA | GHPS MOTA SUGUR | 29120805401 | 2 |
| 23 | BIDAR | BASAVAKALYAN | GOVT MIDDLE SCHOOL URDU RAJESHWAR | 29050213306 | 2 |
| 24 | BIDAR | BHALKI | GOVT HPS BHATSANGAVI | 29050301701 | 2 |
| 25 | BIDAR | BIDAR | GOVT(AIP) URDU HPS MARKUNDA | 29050407503 | 2 |
| 26 | BIDAR | BIDAR | GOVT HPS RAJNAL | 29050410201 | 2 |
| 27 | DAKSHINA KANNADA | BANTWAL | GUPS SURIBAILU | 29240103908 | 2 |
| 28 | DAKSHINA KANNADA | BANTWAL | GUPS KALLARAKODI | 29240105303 | 2 |
| 29 | GULBARGA | AFZALPUR | GOVT HPS KOGANNOOR | 29040206201 | 2 |
| 30 | GULBARGA | ALAND | GOVT HPS CHITALI | 29040102701 | 2 |
| 31 | GULBARGA | CHINCHOLI | GOVT HPS NAVADAGI | 29040308201 | 2 |
| 32 | GULBARGA | CHITTAPUR | GOVT HPS BEDSUR | 29040401301 | 2 |

| | | | | | |
|----|----------|-------------------|-----------------------------|-------------|---|
| 33 | GULBARGA | CHITTAPUR | GOVT HPS LADALAPUR | 29040407101 | 2 |
| 34 | GULBARGA | GULBARGA NORTH | GOVT HPS KANNUR | 29041103501 | 2 |
| 35 | GULBARGA | JEWARGI | GOVT HPS AURAD | 29040601001 | 2 |
| 36 | GULBARGA | JEWARGI | GOVT HPS MURUGANOR | 29040610202 | 2 |
| 37 | HAVERI | HAVERI | HPUS GUTTAL | 29110600704 | 2 |
| 38 | HAVERI | HAVERI | HPS KURGUND | 29110602802 | 2 |
| 39 | HAVERI | SAVANUR | KHPS CHILLUR BADNI | 29111601102 | 2 |
| 40 | KOPPAL | GANGAVATHI | GHPS GOURIPUR | 29070204501 | 2 |
| 41 | KOPPAL | GANGAVATHI | GHPS KALKERI | 29070208301 | 2 |
| 42 | KOPPAL | GANGAVATHI | GHPS NANDIHALLI | 29070211601 | 2 |
| 43 | KOPPAL | GANGAVATHI | GHPSOMASAGAR | 29070213501 | 2 |
| 44 | RAICHUR | SINDHANUR | GHPS GANDHINAGAR | 29060806702 | 2 |
| 45 | RAICHUR | SINDHANUR | GHPS BANGALI COLONY NO-4 | 29060811203 | 2 |

Note: It is requested to the State to ensure that the catchment area of approved upper primary school is not overlapped with each other or other secondary schools.

Annexure-VIII

| Karnataka List of secondary schools where <u>classrooms</u> approved as per 1:40 children available in nearby Urdu Upper Primary School under Strengthening, 2015-16 | | | | | | | |
|----------------------------------------------------------------------------------------------------------------------------------------------------------------------|-------------------|-----------------|------------------------------------------------------------------------------------------------|--------------|-------------------------------------|-------------|-------------------------------------------------|
| Sl. No | Dist | Block | Name of the Near rest Secondary School <u>where the Urdu/Marathi section has been approved</u> | U- DISE code | Name of the Urdu/Marathi medium UPS | Udise Code | <u>Class room approved as per 1:40 children</u> |
| 1 | Bagalako t | Bagalkot | Govt Girls Comp JR Colg Bagalkot | 29020211205 | Govt HPS No 1 Bagalkot | 29020210201 | 4 |
| 2 | Bangalore U South | Bangalore South | Govt High School Fort | 29200800875 | GUMPS Yarab Nagar | 29200135507 | 4 |
| 3 | Belgaum | Khanapur | GOVT HIGH SCHOOL LINGANAMATH | 29010813805 | M.H.P.S. Kumbarda | 29010811801 | 2 |
| 4 | Bidar | Aurad | GOVT H.S. HOLSAMUDRA | 29050106103 | GHPS Urdu Kamalnagar | 29050100152 | 4 |
| 5 | Bidar | Basavakalyan | GHS Hulsoor | 29050205910 | Govt HPS Urdu Hulsoor | 29050205918 | 2 |
| 6 | Bidar | Bidar | GHS Hamalapur | 29050400305 | Govt HPS (Urdu) Chitta | 29050402904 | 2 |
| 7 | Bidar | Bidar | GHS Mannahalli | 29050408708 | Govt HRPS (Urdu) Yakatpur | 29050412802 | 2 |
| 8 | Davanagere | Channagiri | Govt Girls JR College Channagiri | 29140122902 | GUHPS Hoonebagi | 29140109502 | 2 |
| 9 | Gulbarga | Gulbarga South | Govt High School Firozabad | 29040503001 | Govt HPS Urdu Firozabad | 29040503002 | 2 |
| Total | | | | | | | 24 |

List of 239 composite schools under VE

| Sl. No | District | Name of School | UDISE CODE | Trade 1 | Trade 2 |
|--------|-----------------|----------------------------------------------------------------|-------------|------------|-------------------|
| 1 | BANGALORE | Govt. SGM PU college, Nelmangala, Bangalore - 562 123 | 2910120851 | Automobile | Retail |
| 2 | BIJAPUR | GOVT PU COLLEGE KUDAGI | 29030306906 | IT & ITeS | Automobile |
| 3 | BIJAPUR | GOVT S.B PU COLLEGE B.BAGEWADI | 29030324907 | Automobile | IT & ITeS |
| 4 | BIJAPUR | GOVT. PU COLLEGE KANNUR | 29030506215 | IT & ITeS | Healthcare |
| 5 | BIJAPUR | GOVT PU COLLEGE FOR BOYS BIJAPUR | 29031400918 | Automobile | Healthcare |
| 6 | BIJAPUR | GOVT PU COLLEGE FOR GIRLS BIJAPUR | 29031400919 | IT & ITeS | Healthcare |
| 7 | GULBARGA | GPUC MALKHED | 29040906724 | IT & ITeS | Automobile |
| 8 | GULBARGA | GOVT. P.U.COLLEGE SEDAM | 29040909249 | Automobile | Beauty & Wellness |
| 9 | BIDAR | GPUC Basava Kalyana, Bidar-585 327 | 29050200853 | Healthcare | Beauty & Wellness |
| 10 | KOPPAL | GOVT JR PU COLLEGE KARATAGI | 29070208735 | IT & ITeS | Beauty & Wellness |
| 11 | DHARWAD | GOVT. PU COLLEGE KAMALAPUR GULBARGA TQ 585313 | 29090403205 | Healthcare | IT & ITeS |
| 12 | BELLARY | GPUC T.B Dam, Hospet, Bellary- 583 225 | 29120507842 | IT & ITeS | Healthcare |
| 13 | CHITRADURGA | GOVT. PU COLLEGE CHIKKAGONDANAHALLY CHITRADURG TQ | 29130104404 | Retail | Healthcare |
| 14 | CHITRADURGA | GOVT. PU COLLEGE PARASURAMPURA CHALKERE TQ CHIRADURGA DT | 29130213914 | IT & ITeS | Healthcare |
| 15 | CHIKKAMANGALORE | GPUC Sirngeri, Chickmangaore - 577 139 | 29170103609 | Automobile | IT & ITeS |
| 16 | CHIKKAMANGALORE | GPUC Kadur, Chikkamangalore- 577 548 | 29170532504 | Automobile | Healthcare |
| 17 | CHIKKABALLAPURA | GPUC Belur road, Chickmangalore- 577 101 | 29170607002 | Automobile | Healthcare |
| 18 | CHIKKAMANGALORE | GPUC for boys Mudigere, Chickmangalore-577 132 | 29170715502 | Automobile | Healthcare |
| 19 | BANGALORE | GPUC for girls Basavangudi, BP wadia RD, Bangalore - 560 004 | 29200111147 | IT & ITeS | Healthcare |
| 20 | BANGALORE | GOVT. PU COLLEGE KRISHNARAJA PURAM BANGALORE | 29200300130 | IT & ITeS | Healthcare |
| 21 | BANGALORE | GOVT. PU COLLEGE VARTHUR BANGALORE | 29200301914 | IT & ITeS | Beauty & Wellness |
| 22 | BANGALORE | GOVT. PU COLLEGE KADUGODI HOSAKOTE TQ BANGALORE | 29200310514 | Automobile | IT & ITeS |
| 23 | BANGALORE | Govt. ASB composite PU college, Annekal, Bangalore - 562 106 | 29200401051 | IT & ITeS | Healthcare |
| 24 | BANGALORE | GPUC for boys, Old fort, Chamarajpet, Bangalore - 560 018 | 29200800875 | Automobile | Retail |
| 25 | BANGALORE | GPU composite college Madivala, Hosur road, Bangalore- 560 068 | 29200903837 | Automobile | IT & ITeS |
| 26 | BANGALORE RURAL | G.J.C.Doddabelavangala | 29210219006 | IT & ITeS | Retail |

| | | | | | |
|---------------|-----------------|-------------------------------------------------------------------|-------------------|-------------------|-------------------|
| 27 | BANGALORE RURAL | G.J.C HS D.B.PURA | 29210224859 | Automobile | IT & ITeS |
| Sl. No | District | Name of School | UDISE CODE | Trade 1 | Trade 2 |
| 28 | BANGALORE RURAL | G J C DEVANAHALLI | 29210316931 | Automobile | Beauty & Wellness |
| 29 | BANGALORE | GPUC Vijayapura, Devanalli Taluk, Bangalore- 562 135 | 29210317033 | Automobile | IT & ITeS |
| 30 | BANGALORE | GPUC Hosakote, Bangalore - 562 114 | 29210422033 | Automobile | IT & ITeS |
| 31 | HASSAN | GOVT. PU COLLEGE ALUR HASSAN DT 573213 | 29230100121 | IT & ITeS | Automobile |
| 32 | HASSAN | GOVT. PU COLLEGE BELA WADI ARKALGUD TQ HASSAN DT | 29230204503 | Automobile | Healthcare |
| 33 | HASSAN | GGJC ARASIKERE | 29230312452 | Healthcare | Beauty & Wellness |
| 34 | HASSAN | GOVT. PU COLLEGE ARASIKERE HASSAN DT 573103 | 29230312453 | Beauty & Wellness | Automobile |
| 35 | HASSAN | GOVT. PU COLLEGE BANAVARA ARASIKERE TQ HASSAN DT 573112 | 29230314914 | Automobile | Beauty & Wellness |
| 36 | HASSAN | GOVT. PU COLLEGE BELUR HASSAN DT 573115 | 29230411940 | Automobile | IT & ITeS |
| 37 | HASSAN | GOVT. PU COLLEGE FOR BOYS HOLENARASIPUR HASSAN DT 573211 | 29230612134 | IT & ITeS | Automobile |
| 38 | CHAMARAJANAGARA | GPUC for Boys, Chamarajanagara- 571 313 | 29270122802 | Automobile | IT & ITeS |
| 39 | CHAMARAJANAGARA | GPUC KABBAHALLI | 29270207308 | IT & ITeS | Automobile |
| 40 | CHAMARAJANAGARA | Govt. SVK PU college for girls, Kollegal, Chamaraj Nagar- 571 440 | 29270520130 | IT & ITeS | Beauty & Wellness |
| 41 | BANGALORE | GPUC Penya, SRS (Bus Stop) Penya. Bangalore-560 058 | 29280203117 | Automobile | IT & ITeS |
| 42 | BANGALORE | GPUC Jalahalli, Bangalore - 560 013 | 29280500431 | Automobile | IT & ITeS |
| 43 | BANGALORE | GPUC for girls, Malleshwaram, 13th Cross, Bangalore- 560 003 | 29280500744 | IT & ITeS | Beauty & Wellness |
| 44 | BANGALORE | GPUC Yelahanka, Bangalore - 560 064 | 29280700198 | IT & ITeS | Beauty & Wellness |
| 45 | CHIKKABALLAPURA | GPUC Chickaballapura, BB Road, Chikkaballapura | 29290327401 | IT & ITeS | Beauty & Wellness |
| 46 | CHIKKABALLAPUR | GIRLS JC | 29290441006 | Healthcare | IT & ITeS |
| 47 | CHIKKABALLAPURA | Govt. SSEA PU College, Gowribidanur, Chickaballapura | 29290524316 | Automobile | IT & ITeS |
| 48 | CHIKKABALLAPUR | GOVT. PU COLLEGE GUDIBANDA CHIKKABALLAPUR DT | 29290610902 | Automobile | IT & ITeS |
| 49 | CHIKKABALLAPURA | GPUC Shidlghatta, Chickaballapura | 29291128628 | IT & ITeS | Beauty & Wellness |
| 50 | RAICHUR | GOVT PU COLLEGE GIRLS DEVDURGA | 29060121602 | IT & ITeS | Healthcare |
| 51 | RAICHUR | GOVT PU COLLEGE BOYS MANVI | 29060618808 | Automobile | IT & ITeS |
| 52 | RAICHUR | GOVT BOYS HIGHSCHOOL RAICHUR | 29060716378 | Automobile | IT & ITeS |
| 53 | KOPPAL | GOVT JR COLLEGE IRAKALGADA | 29070309206 | IT & ITeS | Healthcare |
| 54 | KOPPAL | Govt.JR. BOYS'COLLEGE KOPPAL | 29070318007 | Automobile | IT & ITeS |
| 55 | KOPPAL | Govt.JR. Girls'S'COLLEGE KOPPAL | 29070318008 | IT & ITeS | Healthcare |

| Sl. No | District | Name of School | UDISE CODE | Trade 1 | Trade 2 |
|--------|-------------|------------------------------------------------------------|-------------|------------|-------------------|
| 56 | KOPPAL | GOVT. PU COLLEGE HANAMASAGAR KUSHTAGI TQ KOPPAL DT 584114 | 29070404811 | Automobile | IT & ITeS |
| 57 | KOPPAL | GOVT BOYS JR COLLEGE KUSTAGI | 29070409630 | Automobile | IT & ITeS |
| 58 | GADAG | GOVT COMP JUN COL NARAGUND | 29080303125 | Automobile | IT & ITeS |
| 59 | DHARWAD | GPUC GopanaKoppa, Hubli taluk, Dharwad- 580 023 | 29090205911 | Automobile | IT & ITeS |
| 60 | DHARWAD | G PU COLL HIREGUNJAL | 29090402302 | Automobile | Healthcare |
| 61 | DHARWAD | GOVT. PU COLLEGE SHELAWADI | 29090504809 | IT & ITeS | Automobile |
| 62 | HAVERI | GOVT P U COLLEGE BISALAHALLI | 29110100110 | IT & ITeS | Healthcare |
| 63 | HAVERI | Govt.SJJM PU college, Byadagi, Haveri- 581 106 | 29110109701 | Automobile | IT & ITeS |
| 64 | CHITRADURGA | GOVT. PU COLLEGE YALAGODU CHITRADURGA DT | 29130102102 | Automobile | Healthcare |
| 65 | CHITRADURGA | GOVT. PU COLLEGE TURUVANUR CHITRADURGA | 29130113206 | Automobile | Healthcare |
| 66 | CHITRADURGA | GOVT.PU COLLEGE BOYS | 29130130321 | Automobile | IT & ITeS |
| 67 | CHITRADURGA | GOVT PU COLLEGE HIRIYUR | 29130315834 | Automobile | IT & ITeS |
| 68 | CHITRADURGA | GOVT MPMU COLLEGE HOLALKERE HOLALKERE | 29130402712 | IT & ITeS | Healthcare |
| 69 | CHITRADURGA | G.J.C HOSADURGA HOSADURGA | 29130522801 | IT & ITeS | Healthcare |
| 70 | CHITRADURGA | GOVT. PU COLLEGE SRIRAMPURA HOSADURGA TQ CHIRADURGA | 29130527201 | Automobile | Beauty & Wellness |
| 71 | CHITRADURGA | G.J.COLLEGE MLK MOLAKALMUR TOWN | 29130600704 | Automobile | Beauty & Wellness |
| 72 | DAVANGERE | GOVT. PU COLLEGE HIREKOGALUR CHANNAGIRI TQ DAVANGERE DT | 29140109104 | IT & ITeS | Healthcare |
| 73 | DAVANGERE | GJC CHANNAGIRI | 29140122902 | Automobile | Beauty & Wellness |
| 74 | DAVANGERE | GJC(EX MUNICIPAL), DAVANAGERE | 29140208207 | IT & ITeS | Beauty & Wellness |
| 75 | DAVANGERE | GBJC, PJ EXTN, DAVANAGERE | 29140308513 | IT & ITeS | Automobile |
| 76 | DAVANGERE | GOVT SEETHAMMA PUC-K.B EXTN | 29140308606 | IT & ITeS | Beauty & Wellness |
| 77 | DAVANGERE | GOVT MOTHI VEERAPPA PUC-P.J.EXTN | 29140309206 | Automobile | IT & ITeS |
| 78 | DAVANGERE | GJC, MALEBENNUR, HARIHARA | 29140405625 | IT & ITeS | Automobile |
| 79 | DAVANGERE | Govt. DRM PU college JC extn, Harihara, Davangere- 577 601 | 29140410601 | Automobile | IT & ITeS |
| 80 | DAVANGERE | GOVT. PU COLLEGE KULAMBI-KUNDUR HONNALI TQ DAVANGERE DT | 29140503305 | IT & ITeS | Healthcare |
| 81 | DAVANGERE | GOVT. PU COLLEGE HONNALI DAVANGERE DT | 29140513405 | IT & ITeS | Beauty & Wellness |
| 82 | DAVANGERE | GOVT. PU COLLEGE NYAMATHI HONNALI TQ DAVANGERE DT | 29140514710 | Healthcare | Beauty & Wellness |
| 83 | DAVANGERE | GOVT. PU COLLEGE JAGALUR DAVANGERE DT | 29140616201 | IT & ITeS | Healthcare |

| Sl. No | District | Name of School | UDISE CODE | Trade 1 | Trade 2 |
|--------|-----------|--------------------------------------------------------------|-------------|-------------------|-------------------|
| 84 | DAVANGERE | GOVT. PU COLLEGE HARAPANAHALLI DAVANGERE DT | 29140709301 | Automobile | Healthcare |
| 85 | KOLAR | GOVT. PU COLLEGE FOR BOYS BANGARPET KOLAR DT 563114 | 29190237956 | Automobile | IT & ITeS |
| 86 | KOLAR | GOVT. PU COLLEGE FOR GIRLS BANGARPET KOLAR DT 563114 | 29190237957 | Beauty & Wellness | Healthcare |
| 87 | KOLAR | GOVT. PU COLLEGE FOR GIRLS MALUR KOLAR DT 563130 | 29190900132 | IT & ITeS | Beauty & Wellness |
| 88 | KOLAR | GOVT. PU COLLEGE TAYALUR MALBAGAL TQ KOLAR DT 563136 | 29191029705 | Automobile | Healthcare |
| 89 | KOLAR | GOVT. PU COLLEGE FOR BOYS SRINIVASAPURA KOLAR DT 563135 | 29191233528 | Automobile | IT & ITeS |
| 90 | KOLAR | GOVT. PU COLLEGE KAMASAMUDRAM BANGARPET TQ KOLAR DT 563129 | 29191303805 | Healthcare | Automobile |
| 91 | HASSAN | GOVT. PU COLLEGE KANATHUR ALUR TQ HASSAN DT | 29230106104 | IT & ITeS | Automobile |
| 92 | HASSAN | GOVT. PU COLLEGE KONANUR ARKALGUDU TQ HASSAN DT 573130 | 29230202508 | Automobile | Healthcare |
| 93 | HASSAN | GOVT. PU COLLEGE BASAVAPATNA ARKALGUDU TQ HASSAN DT 573113 | 29230203605 | Automobile | Healthcare |
| 94 | HASSAN | GOVT. PU COLLEGE FOR BOYS ARKALGUDU HASSAN DT 573102 | 29230228324 | IT & ITeS | Healthcare |
| 95 | HASSAN | GOVT. PU COLLEGE HALEBEEDU BELUR TQ HASSAN DT 573121 | 29230422305 | IT & ITeS | Automobile |
| 96 | HASSAN | GOVT. PU COLLEGE UDAYAPURA CR PATNA TQ HASSAN DT 573157 | 29230502506 | Retail | Automobile |
| 97 | HASSAN | GOVT. PU COLLEGE NUGGEHALLI CR PATNA TQ HASSAN DT 573131 | 29230532106 | Automobile | Healthcare |
| 98 | HASSAN | GOVT. PU COLLEGE SHRAVANABELAGOLA CR PATNA HASSAN DT 573135 | 29230535719 | IT & ITeS | Beauty & Wellness |
| 99 | HASSAN | GGJC HOLENARASIPURA | 29230612135 | IT & ITeS | Healthcare |
| 100 | HASSAN | GOVT. PU COLLEGE MOSALE ? HOSAHALLI HASSAN DT 573212 | 29230700105 | IT & ITeS | Automobile |
| 101 | HASSAN | GOVT. PU COLLEGE FOR GIRLS RACE COURCE ROAD HASSAN DT 573201 | 29230742302 | Healthcare | Beauty & Wellness |
| 102 | HASSAN | GJC BOYS HASSAN | 29230742303 | Retail | Healthcare |
| 103 | HASSAN | GOVT. PU COLLEGE VANIVILAS HASSAN | 29230744101 | Beauty & Wellness | Healthcare |
| 104 | RAICHUR | GPUC Girls Maski | 29060512322 | IT & ITeS | Automobile |
| 105 | RAICHUR | GOVT. PU COLLEGE FOR BOYS SINDHANUR PWD CAMP 584128 | 29060811284 | IT & ITeS | Automobile |
| 106 | TUMKUR | GPUC for boys, B.H Road, Tiptur, Tumkur- 572 202 | 29180824211 | Automobile | Retail |
| 107 | HAVERI | GOVT PU COL HATTIMATTUR | 29111601709 | IT & ITeS | Healthcare |
| 108 | HAVERI | GOVT P U COL KUNIMELLAHALLI | 29111604206 | IT & ITeS | Automobile |
| 109 | TUMKUR | GOVT. PU COLLEGE ,HULIYAR-KENKERE CN HALLI ,TUMKUR DT 572218 | 29180105308 | Automobile | Beauty & Wellness |
| 110 | TUMKUR | GJC GIRLS GUBBI W-2 | 29180200208 | IT & ITeS | Beauty & Wellness |

| Sl. No | District | Name of School | UDISE CODE | Trade 1 | Trade 2 |
|--------|----------|----------------------------------------------------------------|-------------|------------|-------------------|
| 111 | TUMKUR | GOVT. PU COLLEGE ,CHANDRASHEKARPUR GUBBI TQ ,TUMKUR DT 572213 | 29180213905 | IT & ITeS | Beauty & Wellness |
| 112 | TUMKUR | GOVT. PU COLLEGE ,MANCHALDORE GUBBI TQ , TUMKUR TQ 572117 | 29180225102 | IT & ITeS | Healthcare |
| 113 | TUMKUR | GOVT. PU COLLEGE FOR GIRLS ,KUNIGAL DODDAPET ,TUMKUR DT 572130 | 29181013703 | IT & ITeS | Healthcare |
| 114 | KOLAR | GOVT. PU COLLEGE NARASAPURA KOLAR DT 563133 | 29190725206 | Automobile | IT & ITeS |
| 115 | KOLAR | GOVT. PU COLLEGE VEMAGAL KOLAR DT 563157 | 29190734506 | IT & ITeS | Automobile |
| 116 | KOLAR | GOVT. PU COLLEGE MALUR KOLAR DT 563130 | 29190900131 | Retail | Automobile |
| 117 | KOLAR | GOVT. PU COLLEGE MASTHI MALUR TQ KOLAR DT 563139 | 29190923209 | IT & ITeS | Automobile |
| 118 | KOLAR | GOVT. PU COLLEGE TEKAL MALUR TQ KOLAR DT 563137 | 29190930904 | IT & ITeS | Automobile |
| 119 | KOLAR | GOVT. RS COMP PU COLLEGE AVANI MULBAGILU TQ KOLAR DT | 29191001505 | IT & ITeS | Automobile |
| 120 | KOLAR | GOVT. PU COLLEGE MALLANAYAKANAHALLY KOLAR DT | 29191020603 | IT & ITeS | Automobile |
| 121 | MANDYA | GOVT. PU COLLEGE AKKIHEBBALU KR PET TQ MANDYA DT 571605 | 29220100705 | Automobile | Beauty & Wellness |
| 122 | MANDYA | GOVT. PU COLLEGE KIKKERI KR PET TQ MANDYA DT 571423 | 29220118014 | Automobile | Beauty & Wellness |
| 123 | MANDYA | GJC K R PET | 29220133402 | Automobile | Beauty & Wellness |
| 124 | MANDYA | GOVT. COLLEGE FOR GIRLS MADDUR MANDYA DT 571428 | 29220217504 | Healthcare | Beauty & Wellness |
| 125 | MANDYA | GOVT. PU COLLEGE HALAGURU MALAVALLI TQ MANDYA DT 571421 | 29220306017 | Automobile | Beauty & Wellness |
| 126 | MANDYA | GOVT. PU COLLEGE MALAVALLI MANDYA DT 571430 | 29220315305 | Automobile | Healthcare |
| 127 | MANDYA | GOVT. PU COLLEGE MANGALA MANDYA TQ 571403 | 29220412404 | Healthcare | - |
| 128 | MANDYA | GJC EX.MUNCIPAL | 29220419001 | Automobile | Healthcare |
| 129 | MANDYA | GOVT. PU COLLEGE NAGAMANGALA MANDYA DT 571432 | 29220539304 | Automobile | Healthcare |
| 130 | MANDYA | GOVT. PU COLLEGE PANDAVAPURA MANDYA DT 571434 | 29220618405 | Automobile | Beauty & Wellness |
| 131 | MANDYA | GOVT. PU COLLEGE ARAKERE SR PATNA TQ MANDY DT 571415 | 29220700910 | Automobile | Beauty & Wellness |
| 132 | MANDYA | GJC, SRIRANGAPATNA | 29220711503 | Automobile | IT & ITeS |
| 133 | MANDYA | GOVT. PU COLLEGE BASARALU MANDYA DT 571416 | 29220801705 | Automobile | Beauty & Wellness |
| 134 | MANDYA | GOVT. PU COLLEGE VC FARM MANDYA DT 571405 | 29220803404 | Automobile | Healthcare |
| 135 | HASSAN | GOVT. PU COLLEGE PADUVALAHIPPE HLN PUR TQ HASSAN DT 573211 | 29230609502 | Automobile | Healthcare |
| 136 | MYSORE | GJC H K Kote | 29260334503 | IT & ITeS | Automobile |
| 137 | MYSORE | GPUS BELEKERE, BILIKERE | 29260407907 | Automobile | Healthcare |

| Sl. No | District | Name of School | UDISE CODE | Trade 1 | Trade 2 |
|--------|------------|--------------------------------------------------------------------|-------------|------------|-------------------|
| 138 | MYSORE | GJC BOYS HUNSUR HUNSUR WARD-18 | 29260427405 | Automobile | Healthcare |
| 139 | TUMKUR | GOVT. PU COLLEGE,DB PURA KORATAGERE TQ,TUMKUR DT | 29310303204 | IT & ITeS | Automobile |
| 140 | TUMKUR | GOVT. PU COLLEGE ,KORATAGERE ,TUMKUR DT 572129 | 29310321003 | Automobile | IT & ITeS |
| 141 | TUMKUR | GOVT. PU COLLEGE ,IDIHALLY ANDHUGIRI TQ ,TUMKUR 572124 | 29310406006 | IT & ITeS | Automobile |
| 142 | RAMANAGARA | GPUC Magadi, Ramangara - 562 120 | 29320524923 | IT & ITeS | Healthcare |
| 143 | RAMANAGARA | GPUC for Boys, Ramanagara. | 29320611291 | Automobile | IT & ITeS |
| 144 | RAMANAGARA | G HS ARALALUSANDRA ARALALUSANDRA | 29320708803 | Healthcare | IT & ITeS |
| 145 | RAMANAGARA | GJC Kodamballi | 29320711804 | IT & ITeS | Healthcare |
| 146 | RAMANAGARA | GOVT GIRLS COMPOSITE PU COLLEGE | 29320713066 | Automobile | IT & ITeS |
| 147 | RAMANAGARA | GPUC for Girls Channapatna, Ramanagara | 29320713067 | IT & ITeS | Beauty & Wellness |
| 148 | RAMANAGARA | GOVT. PU COLLEGE DODDAALAHALLY KANAKAPUR TQ | 29320815906 | Retail | IT & ITeS |
| 149 | RAMANAGARA | Govt. Ex-Municipal, PU college, Kanakapura, Ramanagara | 29320820951 | Automobile | Retail |
| 150 | YADGIR | GOVT JR COLLAGE B.GUDI BHIMARAYANGUDI | 29330702105 | IT & ITeS | Retail |
| 151 | YADGIR | GOVT. PU COLLEGE FOR GIRLS GURMITKAL YADAGIR TQ 585214 | 29331014117 | IT & ITeS | Retail |
| 152 | HAVERI | MAJID GOVT HS SAVANUR | 29111607507 | IT & ITeS | Healthcare |
| 153 | HAVERI | Govt. Mojid PU College Savanur, Haveri- 581 118 | 29111607507 | IT & ITeS | Healthcare |
| 154 | TUMKUR | GOVT. PU COLLEGE,K MATIGATTA KALLUR CRS,TUMKUR DT | 29180216803 | IT & ITeS | Healthcare |
| 155 | TUMKUR | GOVT. PU COLLEGE ,NONAVINAKERE TIPTUR TQ ,TUMKUR DT 572224 | 29180803410 | Retail | IT & ITeS |
| 156 | TUMKUR | GOVT. PU COLLEGE FOR BOYS ,BH ROAD TUMKUR 572102 | 29180900907 | Automobile | Healthcare |
| 157 | TUMKUR | GJC EMPRESS GIRLS TUM W-16 | 29180902507 | Retail | Healthcare |
| 158 | TUMKUR | GOVT. PU COLLEGE ,BELLAVE ,TUKUR TQ 572107 | 29180913607 | Automobile | Healthcare |
| 159 | TUMKUR | GOVT. PU COLLEGE ,NAGAVALLI TUMKUR TQ 572145 | 29180926708 | IT & ITeS | Beauty & Wellness |
| 160 | TUMKUR | GOVT. PU COLLEGE ,BHAKTARAHALLI KUNIGAL TQ ,TUMKUR DT 572120 | 29181018602 | IT & ITeS | Healthcare |
| 161 | TUMKUR | GOVT. MG PU COLLEGE ,KUNIGAL TUMKUR DT 572130 | 29181034601 | IT & ITeS | Healthcare |
| 162 | KODAGU | G P U COLLEGE ALUR SIDDPURA | 29250207402 | Automobile | IT & ITeS |
| 163 | MYSORE | GIRLS GJC, K R NAGAR-WARD-17 | 29260623004 | Healthcare | Beauty & Wellness |
| 164 | MYSORE | GJC, HEMMARA GALA | 29260912403 | IT & ITeS | Automobile |
| 165 | MYSORE | GJC BOYS NANJANGUD TOWN | 29260928709 | Automobile | IT & ITeS |

| Sl. No | District | Name of School | UDISE CODE | Trade 1 | Trade 2 |
|--------|---------------------|----------------------------------------------------------------------|-------------|------------|-------------------|
| 166 | MYSORE | GJC GIRLS RP ROAD NANJANAGUD WARD-23 | 29260929401 | IT & ITeS | Healthcare |
| 167 | MYSORE | GJC BANNUR, BANNUR WARD-10 | 29261121703 | IT & ITeS | Healthcare |
| 168 | MYSORE | COMPOSITE JR COLLEGE KUVEMPUNAGAR | 29261202401 | Automobile | Healthcare |
| 169 | TUMKUR | GOVT. PU COLLEGE ,MEDIGESHI MADHUGIRI TQ ,TUMKUR DT 572133 | 29310408604 | IT & ITeS | Automobile |
| 170 | TUMKUR | GOVT. PU COLLEGE ,MADHUGIRI TUMKUR DT 572132 | 29310425901 | IT & ITeS | Automobile |
| 171 | TUMKUR | GOVT. PU COLLEGE ,KOTAGUDDA PAVAGADA TQ , TUKUR DT 561215 | 29310509105 | IT & ITeS | Automobile |
| 172 | TUMKUR | GOVT. PU COLLEGE ,PATTANAYKANAHALLI SIRA TQ ,TUMKUR DT 572135 | 29310604013 | IT & ITeS | Beauty & Wellness |
| 173 | TUMKUR | GOVT. SKVD PU COLLEGE ,CHIKKANAHALLI SIRA TQ ,TUMKUR DT 572125 | 29310612707 | IT & ITeS | Automobile |
| 174 | TUMKUR | GOVT. PU COLLEGE,SIRA ,TUMKUR DT 572137 | 29310620206 | IT & ITeS | Retail |
| 175 | TUMKUR | GOVT. PU COLLEGE FOR GIRLS,SIRA,TUMKUR DT | 29310620207 | Retail | IT & ITeS |
| 176 | YADGIR | GOVT. PU COLLEGE SHAHAPUR YADGIR DT 585223 | 29330712338 | IT & ITeS | Retail |
| 177 | YADGIR | GOVT. PU COLLEGE KEMBHAVI SURAPURA TQ YADGIR DT 585216 | 29330811719 | IT & ITeS | Retail |
| 178 | YADGIR | GOVT. PU COLLEGE SURAPURA YADGIR DT 585224 | 29330819434 | IT & ITeS | Retail |
| 179 | YADGIR | GOVT JR COLLEGE YADAGIR | 29331026207 | Automobile | IT & ITeS |
| 180 | UDUPI | GOVT. PU COLLEGE ,HEBRI KARKALA TQ ,UDUPI DT 576112 | 29160100406 | IT & ITeS | Automobile |
| 181 | UDUPI | GOVT. PU COLLEGE ,BYLOOR KARKALA TQ ,UDUPI DT 574102 | 29160102603 | Automobile | IT & ITeS |
| 182 | UDUPI | GOVT. PU COLLEGE ,KUNDAPURA ,UDUPI DT 576201 | 29160311003 | Automobile | IT & ITeS |
| 183 | UDUPI | GOVT. PU COLLEGE ,BYNDOOR KUNDAPURA TQ ,UDUPI DT 576214 | 29160405012 | IT & ITeS | Automobile |
| 184 | DAKSHINA KANNADA | GOVT. PU COLLEGE VAMADAPADAVU BANTWAL TQ DK DT 574324 | 29240101703 | IT & ITeS | Automobile |
| 185 | DAKSHINA KANNADA | GOVT. PU COLLEGE KANYANA BANTWAL TQ DK DT 574241 | 29240102910 | Automobile | Beauty & Wellness |
| 186 | DAKSHINA KANNADA | GOVT. PU COLLEGE KURNAD MUDIPU BANTWAL TQ DK DT 574153 | 29240104405 | IT & ITeS | Automobile |
| 187 | DAKSHINA KANNADA | GOVT. PU COLLEGE GERUKATTE BELTHANGADI TQ SK DIST | 29240202104 | IT & ITeS | Automobile |
| 188 | DAKSHINA KANNADA | GOVT. PU COLLEGE KOKRADI BELTHANGADI TQ SK DIST | 29240203002 | Automobile | IT & ITeS |
| 189 | DAKSHINA KANNADA | GOVT. PU COLLEGE PUNJALKATTE BELTHANGDI TQ DK DT 574233 | 29240203303 | IT & ITeS | Healthcare |
| 190 | DAKSHINA KANNADA | GOVT. PU COLLEGE VENUR BELTHANGDI TQ DK DT 574242 | 29240207902 | Automobile | IT & ITeS |
| 191 | DAKSHINA KANNADA | GOVT. PU COLLEGE BELTHANGADY DK DT 574214 | 29240208702 | Automobile | Healthcare |
| 192 | DAKSHINA KANNADA | GOVT. PU COLLEGE KADABA PUTTUR TQ DK DT 574221 | 29240402706 | Automobile | IT & ITeS |

| Sl. | District | Name of School | UDISE COD | Trade 1 | Trade 2 |
|-----|----------------------|--------------------------------------------------------------|-------------|------------|-------------------|
| 193 | DAKSHINA KANNADA | GOVT. PU COLLEGE BETTAMPADY PUTTUR TQ DK DT 574259 | 29240405104 | Automobile | Beauty & Wellness |
| 194 | DAKSHINA KANNADA | GOVT. PU COLLEGE UPPINANGADI PUTTUR TQ DK DT 57424 | 29240406609 | IT & ITeS | Automobile |
| 195 | DAKSHINA KANNADA | GOVT. PU COLLEGE KUMBRA PUTTUR TQ DK DT 574258 | 29240406707 | IT & ITeS | Beauty & Wellness |
| 196 | DAKSHINA KANNADA | GOVT. PU COLLEGE PUTTUR DK DT 574201 | 29240407501 | Automobile | IT & ITeS |
| 197 | UTTARA KANNADA | GOVT. PU COLLEGE BANAVASI SIRSI TQ NK DT | 29340324102 | Retail | IT & ITeS |
| 198 | BAGALKOT | GOVT BOYS HS & JR. COMP GULEDGUDD | 29020117303 | IT & ITeS | Healthcare |
| 199 | BAGALKOT | GOVT. PU COLLEGE FOR GIRLS BAGALKOT | 29020211205 | IT & ITeS | Healthcare |
| 200 | BAGALKOT | GOVT. SCNN GIRLS PU COLLEGE BILAGI BAGALKOT DT | 29020608006 | IT & ITeS | Automobile |
| 201 | BAGALKOT | GOVT GIRLS HS & JR. COLG JAMKHANDI | 29020908203 | IT & ITeS | Healthcare |
| 202 | BAGALKOT | GOVT PB PU JR. COLL. JAMAKHANDI | 29020908802 | Automobile | Healthcare |
| 203 | UDUPI | GOVT. PU COLLEGE ,KOTESHWAR KUNDAPURA TQ ,UDUPI DT 576222 | 29160306804 | IT & ITeS | Automobile |
| 204 | UDUPI | GOVT. PU COLLEGE ,BIDKALKATTE KUNDAPURA TQ UDUPI DT 576222 | 29160308906 | IT & ITeS | Automobile |
| 205 | UDUPI | GOVT. PU COLLEGE ,KAMBADAKONE KUNDAPURA TQ ,UDUPI DIST | 29160402605 | IT & ITeS | Automobile |
| 206 | DAKSHINA KANNADA | GPUC, BALMATTA | 29240302807 | Healthcare | Beauty & Wellness |
| 207 | DAKSHINA KANNADA | GOVT. PU COLLEGE SULLIYA SK DIST | 29240504403 | IT & ITeS | Beauty & Wellness |
| 208 | DAKSHINA KANNADA | GOVT. PU COLLEGE SULLIA DK DT 574239 | 29240504702 | IT & ITeS | Automobile |
| 209 | Kodagu | GOVT. PU COLLEGE, SHIRANGALA SOMA WARPET TQ, COORG DT 571232 | 29250210405 | Automobile | Beauty & Wellness |
| 210 | KODAGU | GPU SUNTIKOPPA | 29250211207 | IT & ITeS | Automobile |
| 211 | Kodagu | GOVT. PU COLLEGE KUSHALNAGAR SOMA WARPET TQ COORG DT 571234 | 29250218601 | IT & ITeS | Healthcare |
| 212 | Kodagu | GOV JUNIOR COLLEGE PONNAMPET | 29250304713 | Automobile | IT & ITeS |
| 213 | Kodagu | GOVT. PU COLLEGE, VIRAJPET, COORG DT 571218 | 29250313803 | IT & ITeS | Beauty & Wellness |
| 214 | UTTARA KANNADA SIRSI | GPU SHIVAJI C. HALIYAL | 29340428007 | Automobile | IT & ITeS |
| 215 | UTTARA KANNADA | GPUC Mundgod, Uttara Kannada- 581 349 | 29341008323 | Automobile | IT & ITeS |
| 216 | BELGAUM | Govt Saradar PU College Kaktivies road, Belgaum-590 002 | 29010303703 | Automobile | Healthcare |
| 217 | SHIMOGA | GOVT. PU COLLEGE ,ANANDAPURAM SAGAR TQ ,SHIMOGA DT 577412 | 29150331301 | Healthcare | Beauty & Wellness |
| 218 | SHIMOGA | GOVT. PU COLLEGE , THUGARSI, SHIKARIPURA TQ, ,SHIMOGA | 29150426705 | Automobile | Healthcare |
| 219 | SHIMOGA | GPUC THIRTHAHALLI | 29150737804 | IT & ITeS | Beauty & Wellness |

| | | | | | |
|---------------|----------------------|-------------------------------------------------------------|-------------------|----------------|-------------------|
| 220 | UDUPI | GOVT. PU COLLEGE ,UDUPI 576101 | 29160212702 | IT & ITeS | Retail |
| Sl. No | District | Name of School | UDISE CODE | Trade 1 | Trade 2 |
| 221 | UDUPI | GOVT. PU COLLEGE FOR GIRLS ,UDUPI -576101 , | 29160213204 | IT & ITeS | Beauty & Wellness |
| 222 | Kodagu | GOVT. PU COLLEGE,MADIKERI,COORG DT 571201 | 29250111903 | Automobile | Healthcare |
| 223 | BELGAUM | GOVT. PU COLLEGE KUKATANOOR ATHANI TQ BELGAUM DT | 29300104535 | IT & ITeS | Healthcare |
| 224 | BELGAUM | GOVT. PU COLLEGE NADHI-INGALAGAON ATHANI T BELGAUM DT | 29300106006 | IT & ITeS | Healthcare |
| 225 | BELGAUM | GOVT. PU COLLEGE URUBINAHATTI GOKAK TQ BELGAUM DT | 29300601705 | IT & ITeS | Healthcare |
| 226 | BELGAUM | GOVT. EX-MUNICIPAL PU COLLEGE GOKAK BELGAUM DT | 29300603436 | IT & ITeS | Healthcare |
| 227 | BELGAUM | GOVT. PU COLLEGE HUKKERI BELGAUM DIST | 29300702403 | IT & ITeS | Healthcare |
| 228 | BELGAUM | GOVT. PU COLLEGE RAIBAG BELGAUM DT | 29301004943 | IT & ITeS | Automobile |
| 229 | UTTARA KANNADA SIRSI | GOVT COMP JR COLLEGE GULLAPUR GULLAPUR | 29340704602 | Healthcare | Beauty & Wellness |
| 230 | BAGALKOT | GOVT JR COLLEGE VIDYANAGAR HUNAGUND | 29020720204 | IT & ITeS | Beauty & Wellness |
| 231 | SHIMOGA | GOVT. PU COLLEGE ,ANAVERI BHADRAVATHI TQ ,SHIMOGA TQ 577243 | 29150100809 | IT & ITeS | Healthcare |
| 232 | SHIMOGA | GGPUC NEW TOWN BHADRAVATHI | 29150117306 | IT & ITeS | Beauty & Wellness |
| 233 | SHIMOGA | GOVT. PU COLLEGE ,AYANUR ,SHIMOGA 577201 | 29150537606 | IT & ITeS | Automobile |
| 234 | SHIMOGA | GOVT. PU COLLEGE ,BH ROAD ,SHIMOGA TQ 577211 | 29150539608 | Automobile | Beauty & Wellness |
| 235 | SHIMOGA | GPUC SORABA | 29150641501 | Healthcare | Beauty & Wellness |
| 236 | UDUPI | GOVT. PU COLLEGE ,KARKALA ,UDUPI TQ 576113 | 29160105212 | IT & ITeS | Automobile |
| 237 | UDUPI | GOVT. PU COLLEGE ,HIRIADKA ,UDUPI TQ 576113 | 29160202013 | IT & ITeS | Healthcare |
| 238 | UDUPI | GOVT. PU COLLEGE ,BRAHMAVAR UDUPI TQ ,UDUPI DIST | 29160505405 | IT & ITeS | Automobile |
| 239 | Belgaum Chikodi | Govt High School Chikkodi | 29300502440 | IT & ITeS | Healthcare |

List of 19 secondary schools with PU College under VE

| Sl. No | District | Name of School | UDISE CODE | Trade 1 | Trade 2 | UDSIE of PU college in same premises |
|--------|-----------------|-------------------------------------------------------------------|-------------|------------|-------------------|--------------------------------------|
| 1 | BIDAR | GPUC Basava Kalyana, Bidar-585 327 | 29050200853 | Healthcare | Beauty & Wellness | 29270207309 |
| 2 | KOPPAL | GOVT JR PU COLLEGE KARATAGI | 29070208735 | IT & ITeS | Beauty & Wellness | 29270520162 |
| 3 | BELLARY | GPUC T.B Dam, Hospet, Bellary- 583 225 | 29120507842 | IT & ITeS | Healthcare | 29280203126 |
| 4 | BANGALORE | GPU composite college Madivala, Hosur road, Bangalore- 560 068 | 29200903837 | Automobile | IT & ITeS | 29280720719 |
| 5 | BANGALORE | GPUC Hosakote, Bangalore - 562 114 | 29210422033 | Automobile | IT & ITeS | 29290441909 |
| 6 | CHAMARAJANAGARA | GPUC for Boys, Chamarajanagara- 571 313 | 29270122802 | Automobile | IT & ITeS | 29290610903 |
| 7 | CHAMARAJANAGARA | GPUC KABBAHALLI | 29270207308 | IT & ITeS | Automobile | 29291128644 |
| 8 | CHAMARAJANAGARA | Govt. SVK PU college for girls, Kollegal, Chamaraj Nagar- 571 440 | 29270520130 | IT & ITeS | Beauty & Wellness | 29070404816 |
| 9 | BANGALORE | GPUC Penya, SRS (Bus Stop) Penya. Bangalore-560 058 | 29280203117 | Automobile | IT & ITeS | 29320611296 |
| 10 | BANGALORE | GPUC Yelahanka, Bangalore - 560 064 | 29280700198 | IT & ITeS | Beauty & Wellness | 29320819312 |
| 11 | CHIKKABALLAPUR | GIRLS JC | 29290441006 | Healthcare | IT & ITeS | 29020601128 |
| 12 | CHIKKABALLAPUR | GOVT. PU COLLEGE GUDIBANDA CHIKKABALLAPUR DT | 29290610902 | Automobile | IT & ITeS | 29010303704 |
| 13 | CHIKKABALLAPUR | GPUC Shidlghatta, Chickaballapura | 29291128628 | IT & ITeS | Beauty & Wellness | 29300502462 |
| 14 | KOPPAL | GOVT. PU COLLEGE HANAMASAGAR KUSHTAGI TQ KOPPAL DT 584114 | 29070404811 | Automobile | IT & ITeS | 29270207309 |
| 15 | RAMANAGARA | GPUC for Boys, Ramanagara. | 29320611291 | Automobile | IT & ITeS | 29270520162 |
| 16 | RAMANAGARA | Govt. Ex-Municipal, PU college, Kanakapura, Ramanagara | 29320820951 | Automobile | Retail | 29280203126 |
| 17 | BAGALKOT | GOVT. SCNN GIRLS PU COLLEGE BILAGI | 29020608006 | IT & ITeS | Automobile | 29280720719 |

| | | | | | | |
|----|-----------------|---------------------------------------------------------------|-------------|------------|------------|-------------|
| | | BAGALKOT DT | | | | |
| 18 | BELGAUM | Govt Saradar PU College Kaktivies road, Belgaum-590 002 | 29010303703 | Automobile | Healthcare | 29290441909 |
| 19 | Belgaum Chikodi | Govt High School Chikkodi | 29300502440 | IT & ITeS | Healthcare | 29290610903 |

List of 11 non composite school under VE

| Sl. No | District | Name of School | UDISE CODE | Trade 1 | Trade 2 |
|--------|-----------------|---------------------------------------------------------|-------------|------------|-------------------|
| 1 | BIDAR | GPUC for boys, Bidar-585 401 | 2950415108 | IT & ITeS | Healthcare |
| 2 | GULBARGA | GPUC for Girls, oppt SP Office, Gulbarga-585 105 | 29040534304 | IT & ITeS | Beauty & Wellness |
| 3 | BIDAR | GPUC Aurad, Bidar-585 326 | 29050120103 | Automobile | IT & ITeS |
| 4 | BELLARY | GPUC Ex Municipal Aanamtapur Road, Bellary - 583 101 | 29120901729 | IT & ITeS | Healthcare |
| 5 | BANGALORE | GPUC Jakkur, Bangalore - | 29280718309 | Retail | IT & ITeS |
| 6 | CHIKKABALLAPURA | GPUC Bagepalli, Chikkaballapura | 29290123502 | Automobile | IT & ITeS |
| 7 | KOPPAL | GPUC for girls Koppal, Koppal- 583 231 | 29070318002 | IT & ITeS | Healthcare |
| 8 | MYSORE | GPUC for girls, Peoples park, Nazarbad, Mysore- 570 010 | 29260703405 | IT & ITeS | Beauty & Wellness |
| 9 | MYSORE | GJS BIFERTICATED MAHARAJA | 29260706708 | Retail | Automobile |
| 10 | BELGAUM | GPUC Bailhongal, Belgaum. | 29010200774 | Automobile | Healthcare |
| 11 | BELGAUM | GPUC Khanapur, Belgaum | 29010813308 | IT & ITeS | Beauty & Wellness |

Revised costing of VE (Non-recurring)

| S.No. | Activities | Costing for 250 Schools | | | Remarks (₹ in lakh) |
|----------|------------------------------------------------|-------------------------|-----|-----------------|--------------------------------------------------------|
| | | Unit | Phy | Fin | |
| A | NON RECURRING | | | | |
| A.01 | Workshop / Laboratory | | | | |
| i | Zone II, 10-14T | 12.822 | 12 | 153.86 | Calculated as per seismic zone wise State SOR @ 1 Lab |
| ii | Zone II, 14-18T | 12.289 | 8 | 98.31 | |
| iii | Zone II, 18-22T | 12 | 13 | 156.00 | |
| iv | Zone II, 22-26T | 11.79 | 14 | 165.06 | |
| v | Zone III, 10-14T | 12.822 | 4 | 51.29 | |
| vi | Zone III, 14-18T | 12.289 | 3 | 36.87 | |
| vii | Zone III, 18-22T | 12 | 3 | 36.00 | |
| viii | Zone III, 22-26T | 11.79 | 6 | 70.74 | |
| xi | Zone II, 10-14T | 21.37 | 43 | 918.91 | Calculated as per seismic zone wise State SOR @ 2 Labs |
| x | Zone II, 14-18T | 20.483 | 47 | 962.70 | |
| xi | Zone II, 18-22T | 20 | 34 | 680.00 | |
| xii | Zone II, 22-26T | 19.65 | 14 | 275.10 | |
| xiii | Zone III, 10-14T | 21.37 | 13 | 277.81 | |
| xiv | Zone III, 14-18T | 20.483 | 15 | 307.25 | |
| xv | Zone III, 18-22T | 20 | 13 | 260.00 | |
| xvi | Zone III, 22-26T | 19.65 | 4 | 78.60 | |
| | Total (Workshop / Laboratory) | | | 4528.497 | |
| A.02 | Tools, Equipments and furniture | | | | |
| i | AUTOMOBILE | 5 | 145 | 725 | As per categorisation of Trades |
| ii | HEALTHCARE | 5 | 95 | 475 | |
| iii | IT & ITeS | 3 | 178 | 534 | |
| iv | BEAUTY & WELLNESS | 3 | 58 | 174 | |
| v | RETAIL | 2 | 23 | 46 | |
| | Total (Tools, Equipments and furniture) | | | 1954 | |
| A | Total Non-Recurring | | | 6482.50 | |