

**F.No.8-4/2015-RMSA-VI/VE**  
**Government of India**  
**Ministry of Human Resource Development**  
**Department of School Education and Literacy**

\*\*\*\*\*

Shastri Bhawan, New Delhi

Date:- 26.05.2015

**Minutes of the Meeting held on the 9<sup>th</sup> April, 2015 for approval of Annual Work Plan & Budget 2015-16 for the UT of PUDUCHERRY under the Centrally Sponsored Scheme of Integrated Rashtriya Madhyamik Shiksha Abhiyan (RMSA).**

1. The Meeting of the Project Approval Board of the RMSA to consider the Annual Work Plan & Budget 2015-16 for the UT of Puducherry under RMSA, including the components of ICT@ Schools, Girls' Hostels, Vocational Education and Inclusive Education for the disabled at Secondary Stage (IEDSS) was held on 9<sup>th</sup> April 2015 (**through Video Conferencing**), under the Chairpersonship of Ms. Vrinda Sarup, Secretary, Department of School Education & Literacy.
2. The list of participants is at **Annexure-I**.
3. Secretary (SE&L) welcomed all the participants and in her opening remarks, appreciated the efforts made by the UT and overall progress achieved under RMSA, However, drawing attention to the gross current spill over ₹1891.79 lakh under non-recurring civil works, she expressed her concern over the general pendency of civil works in the UT and progress in completion which significantly curbs the capacity of UT undertake or surrender not upgraded new schools.

The Chairperson referred to the Swachh Vidyalaya initiative and underlined the need for ensuring completion of all the toilets sanctioned under RMSA, expeditiously. She noted that the construction of toilets approved during special PABs held in November-December, 2014 (to fill in the gaps indicated as per UDISE 2013), and for which the Central Share of non-recurring grant has already been released, has to be completed by the concerned States/UTs by May, 2015. She advised that gaps of toilets, if any, in the government secondary schools, based on UDISE 2014, should be included by the States/UTs in their AWP&B proposals for 2015-16.

On interventions focused on quality, she shared with the States the initiative being taken under Rashtriya Avishkar Abhiyan and the need for States to synergise and enhance their efforts towards impacting the overall quality of Science and Maths education in secondary Schools including building capacity of Maths and Science teachers.

It was informed that the NUEPA has developed a framework of national School Standards and Evaluation, that aims to bring out key facets of school standards, and its evaluation for further school improvement. Funds are being provisioned for a 3 day orientation workshop of educational administrators both at district and state level, on the framework and its implementation. NUEPA has been requested to develop a module that can be used by the States to conduct the orientation workshop. It is also important that selection of first set of these educational administrators for this workshop is done in a manner so as to ensure that they in turn are able to conduct further sensitization of their teams.

The Chairperson also shared the initiatives of 'Kala Utsav' a national event that would build on States' current activities to promote and encourage local Arts and cultural heritage amongst its students. This would be steered by NCERT in coordination with States and a specific line item with funds is being earmarked in the current Plan approvals. Detail note on 'Kala Utsav' is being shared with States separately (**Annexure-VI**).

While expressing her concern over quality of inclusion she emphasised the need for States to pay more attention to availability and support of special educators, identification of CWSN and focused support to their learning needs.

Ms. Ankita Mishra Bundela, Deputy Secretary (RMSA-I) gave a detailed overview of the status of implementation, planning and monitoring of RMSA in Puducherry (**Annexure-II**).

**4. The areas of concern highlighted include:**

- The Ratio of GER & NER decreased.
- Dropout rate is decreased & retention rate is increased. Also Transition rate increased from VIII standards to IX standards.
- She has given importance to educational tour & keeping in view the outcomes of Self Defense training for Girls considered for three months.

## 5. Annual Work Plan & Budget 2015-16:

Thereafter, the intervention-wise discussions were held and the following decisions were taken and approval accorded:

Sl. No.	Heads
<b>A</b>	<b>Committed outlay</b>
<b>1</b>	<b>Non-Recurring</b>
	<p><b>1.1</b> Spill- over of ₹1891.79 lakh on account of civil interventions sanctioned for new schools, Strengthening and ICT schools. <b>The UT has surrendered 2 new schools (i. GMS, Adingapattu and ii. GMS, Manalipet approved in 2011-12 with one section) which were cancelled due to poor enrolment &amp; not upgraded.</b> The strengthening, teacher quarters, drinking waters, toilets and major repairs under RMSA was approved with a stipulation that all the spill-over may be liquidated during 2015-16. Details are at <b>Annexure-III.</b></p> <p><b>1.2</b> On the brief discussion of ICT, out of 355 schools (169 schools approved in 2007-08, 182 schools and 4 smart schools approved in 2011-12) approved in previous year, 250 schools are cancelled. An amount of ₹169.00 lakh has been released against the approval of 169 schools will be adjusted in future releases of ICT component. Further, UT has provided only list of 105 (355 - 250) eligible schools. So that final list of 105 schools approved @ ₹6.40 lakh/per school with a total outlay of ₹672.00 lakh. <b>This is no new approval; therefore the amount is not reflected in costing sheet.</b> List of schools is <b>Annexure-VII.</b></p>
<b>B</b>	<b>Recurring</b>
<b>2</b>	<b>Salary</b>
	<p><b>2.1</b> The PAB approved the salary of 24 subject teachers in position @ ₹35,000/- per month for 12 months with a total outlay of ₹100.80 lakh.</p>
<b>3</b>	<b>Training</b>

	<p><b>3.1</b> The PAB approved in-service teacher training for 437 existing teachers including teaching head masters (121 social science teachers and 316 language and other teachers) @ ₹300/- per day for 10 days with a total outlay of ₹13.11 lakh.</p> <p><b>3.2</b> The PAB approved training of Key Resource Persons(KRPs) for 20 KRPs in 4 districts (5 KRPs/district) @ ₹300/- per day for 5 days with a total outlay of ₹0.30 lakh.</p> <p><b>3.3</b> The PAB approved training of Master Resource Person(MRPs) for 40 MRPs in 4 district (10 MRPs/district) @ ₹300/- per day for 5 days with a total outlay of ₹0.60 lakh.</p> <p><b>3.4</b> The PAB approved Professional Development programme of headmasters/SLDP for 50 Head master @ ₹300/- per day for 16 days with a total outlay of ₹2.40 lakh.</p> <p><b>3.5</b> The PAB approved Environment Building Programme/Community Mobilization (IEDSS) Organizing EBP at Block level in 6 Blocks for Principals, Educational Administrators, Parents and Guardians @₹10,000/- per block with a total outlay of ₹0.60 lakh.</p> <p><b>3.6</b> The PAB approved training of Educational Administrators in Assessment of School Standards and Evaluation for 40 teachers @ ₹300/- per day for 3 days with a total outlay of ₹0.36 lakh.</p>
<b>4</b>	<b>Other Recurring Components</b>
	<p><b>4.1</b> The PAB approved school grant for 130 Schools @ ₹0.50 lakh per school with a total outlay of ₹65.00 lakh.</p>
	<p><b>4.2</b> The PAB approved for Student Oriented Activity for 268 CWSN (excluding learning disability) @ ₹3000/- per CWSN with a total outlay of ₹8.04 lakh. All the activities for CWSN including providing assistive devices, survey, certification etc. is to be managed from this fund. The PAB also suggested the UT of Puducherry to explore the provisions for Aids &amp; Appliances to CWSN through schemes like ADIP operated by Department of Disability Affairs.</p>
<b>5</b>	<b>Project A (Focus on Science and Mathematics)</b>

	<p><b>5.1</b> The PAB approved in-service training to Science and Math teachers for 247 teachers (123 Math teachers and 124 Science teachers) @ ₹300/- per day for 10 days with a total outlay of ₹7.41 lakh.</p> <p><b>5.2</b> The PAB approved Science exhibition at district level for 2 Districts @ ₹1.00 lakh/district with a total outlay of ₹2.00 lakh.</p> <p><b>5.3</b> The PAB approved educational trip to outside the UT for 1000 students @ ₹2000/- per students with a total outlay of ₹20.00 lakh.</p> <p><b>5.4</b> The PAB approved special coaching for learning enhancement for 2158 (1079 boys and 1079 girls) students of class IX of Government secondary school (20% of 10793 students enrolled in class IX as per UDISE 2014-15) @ ₹500/- per students with a total outlay of ₹10.79 lakh.</p>
<b>6</b>	<b>Promotion of Art and Culture</b>
	<p><b>6.1 Kala Utsav:</b> The PAB approved total outlay of ₹6.00 lakh for promoting and encouraging students to learn and practice local art forms-mainly music, dance and theatre in schools. Such talents, preferably, group presentation may then be showcased and awarded at UT level, Annual National events will be held to celebrate and award such talents and the initiative will be guided and coordinated by the NCERT.</p> <p><b>6.2</b> The PAB approved training for girls students under self defense training in 109 Government schools @ ₹ 3000/- per school for 3 months as honorarium for trainers with a total outlay of ₹9.81 lakh.</p>
<b>7</b>	<b>MMER</b>
	<b>7.1</b> MMER of ₹12.36 lakh has been approved @ 5% of total financial implication.

6. The status of financial details including committed liabilities of the previous years and spill-over thereof, a new approval for recurring and non-recurring nature against the proposals of the UT is summarized in the following table:

(₹In Lakh)

Components	Approved of 2015-16			Spill over	Grand total including spill over
	Non-Recurring	Recurring	Total		
<b>RMSA including MMER in recurring</b>	0.00	250.94	250.94	1219.79	1470.73
<b>IEDSS</b>	0.00	8.64	8.64	0.000	8.64
<b>ICT</b>	0.00	0.00	0.00	672.00	672.00
<b>GH</b>	0.00	0.00	0.00	0.000	0.00
<b>VE</b>	0.00	0.00	0.00	0.000	0.00
<b>Total</b>	<b>0.00</b>	<b>259.58</b>	<b>259.58</b>	<b>1891.79</b>	<b>2151.37</b>

The costing sheet indicating the component wise approval for RMSA is at **Annexure-IV**.

The other components proposed by the State were considered and not approved by the Board details at **Annexure-V**.

7. The PAB brought the following points to the notice of State Project Director, Puducherry and requested for corrective action:

- (i) Large backlog of the incomplete Civil Works must be completed and monitored regularly.
- (ii) UT needs to conceptualize and create the necessary facilitative changes to ensure that vocational education component of RMSA in secondary/senior secondary school provides a viable option to students.
- (iii) Emphasis should be given to quality learning outcomes through timely recruitment of teachers against vacancies, optimal use of teachers training for science and mathematics where linkages with good resource person from higher education institutions should be drawn upon and to facilitate the completion of NAS for class X being conducted by NCERT.
- (iv) The CTEs, SCERTs & DIET must be used for conduct of in service teacher training of secondary school teachers also.
- (v) Puducherry needs to conceptualize and avail the Module regarding guidance of Adolescence which is available in the website of NCERT.
- (vi) Education Secretary, Puducherry should regularly review expenditure and release of funds to schools/field under RMSA as well as receipts from Govt. of India and UT Govt. to improve fund flows in the programme.

8. The release of funds to different schemes will be further guided by the following conditions:
- (i) The State/UT Administration shall give a written commitment for meeting its share of the RMSA, ICT@ school, IEDSS, Girls Hostel & Vocational Education of the budget approved according to prescribed sharing pattern of the schemes.
  - (ii) SMDCs or equivalent bodies should be constituted and accounts opened to incur expenditure under school grant, minor repair, civil works, and other such expenditure, which have to be incurred only through these bodies as per RMSA norms.
  - (iii) The State Government will maintain their level of investment in Secondary education as in 2009-10 and give the details of this to GOI before the release of second
  - (iv) The second installment would only be released after (a) the proportionate installment of State/UT share has been released, (b) at least 50% expenditure against available funds has been incurred, (c) utilization certificate has been submitted for funds released in the year 2013-14 and (d) Audit Reports have been submitted for the year 2014-15.
9. The meeting ended with a vote of thanks to the Chair.

**List of participants**

1. Ms. Vrinda Sarup  
Secretary, SE&L, MHRD Chairperson
2. Mr. J. Alam  
Joint Secretary, Secondary Education, MHRD
3. Ms. Ankita Mishra Bundela  
Deputy Secretary, RMSA-1 Division, MHRD
4. Shri Sushil Bhushan, Under Secretary, RMSA-IV/VE

**Representatives from the UT of Puducherry:**

1. Dr. J. Krishnaraju, State Project Director, Puducherry
2. Shri S. Pugazhendi , State Coordinator, Puducherry
3. Shri P. M. Muthulakshmi, State Coordinator, Puducherry
4. Shri P. Saravanan, State Coordinator, Puducherry
5. Shri V. George Fernandez, State Coordinator, Puducherry
6. Shri A. Rajendiran, State Coordinator, Puducherry
7. Shri R. Ramakrishnan, State MIS Coordinator, Puducherry

**TSG-RMSA**

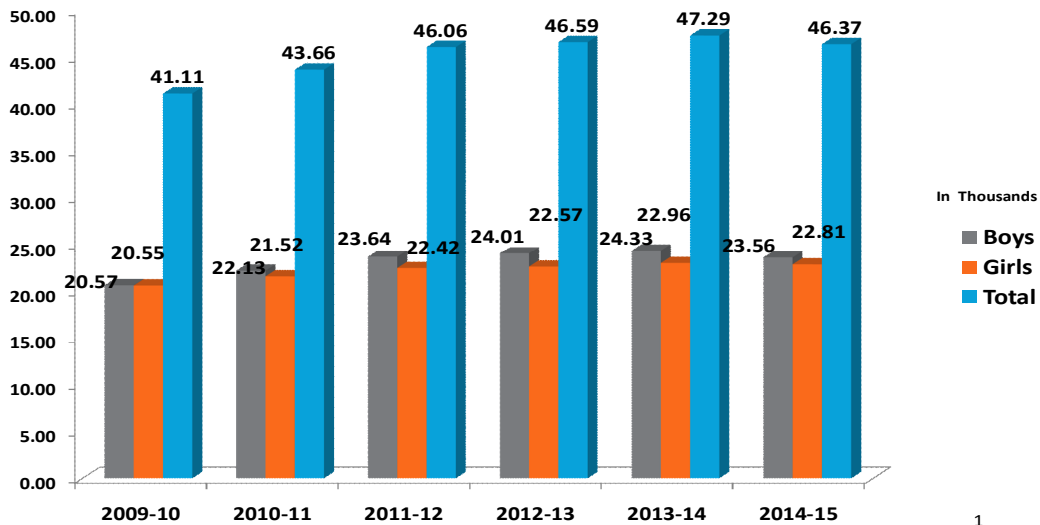




Presentation on Appraisal Report  
**Puducherry**

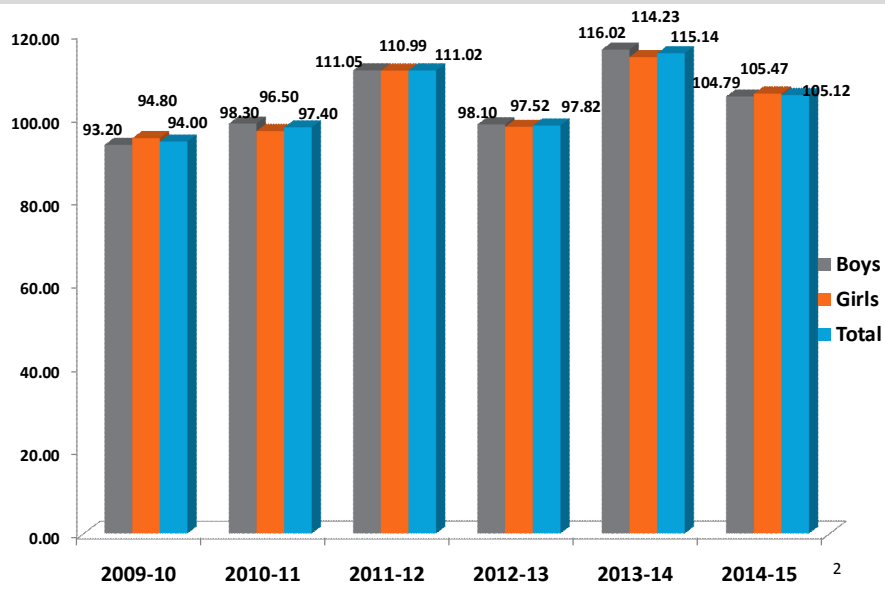
**Project Approval Board Meeting 2015-16**  
**9<sup>th</sup> April, 2015**

**Enrolment (Secondary level)**

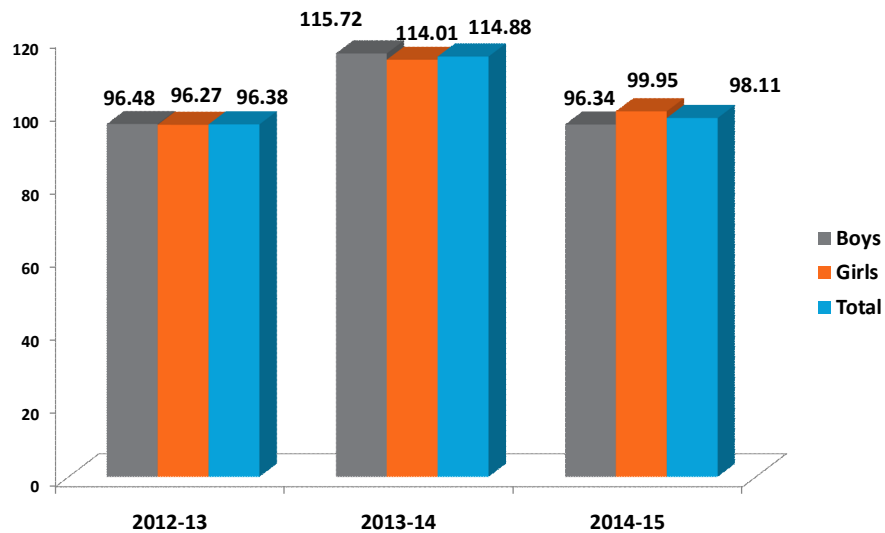


Source: 2009-10 to 2011-12 SSE & 2012-13 to 2014-15 UDISE.

## Gross Enrolment Ratio (Secondary level)

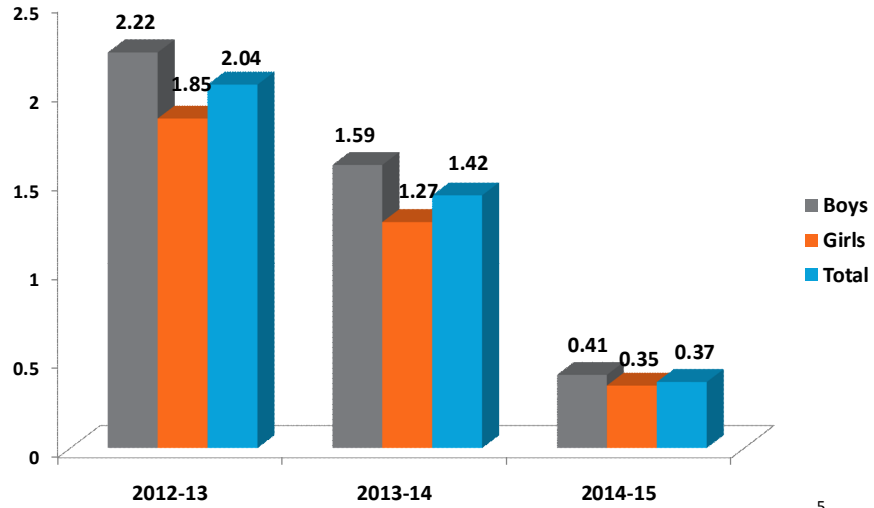


## Net Enrolment Ratio (Secondary level)



Source: UDISE.

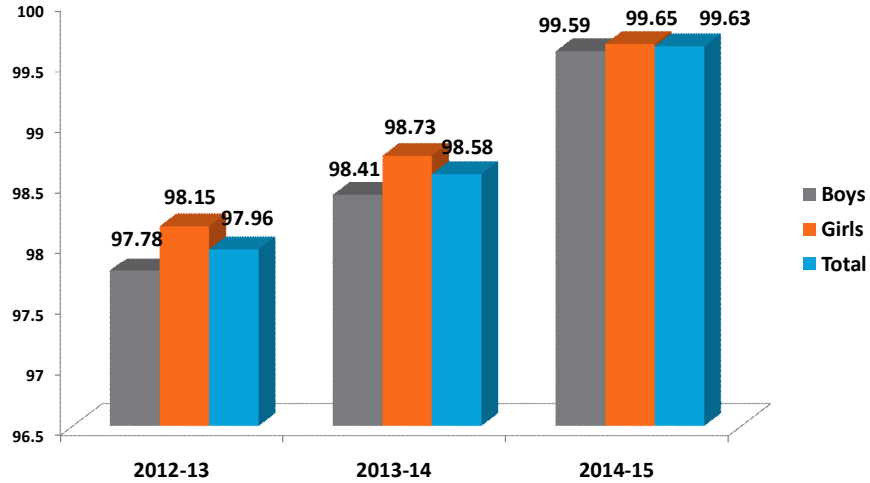
## Dropout Rate (Secondary level)



Source: UDISE.

5

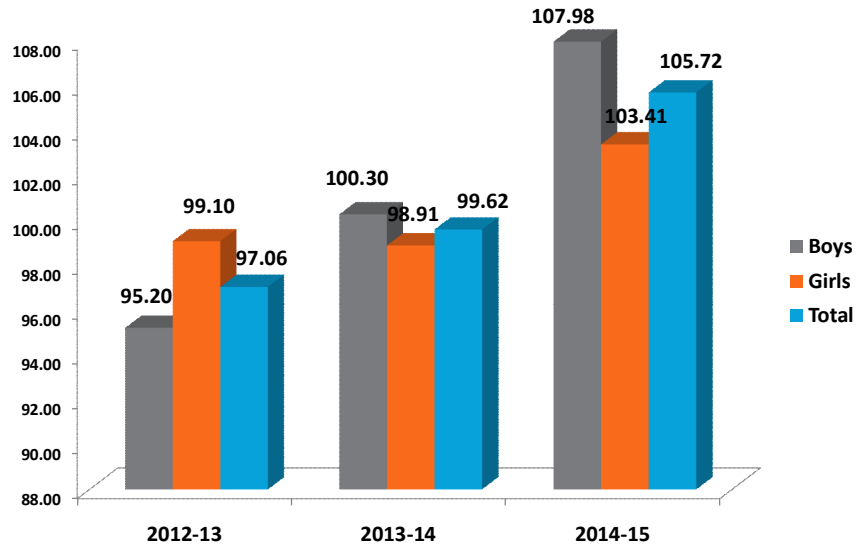
## Retention Rate (Secondary level)



Source: UDISE.

4

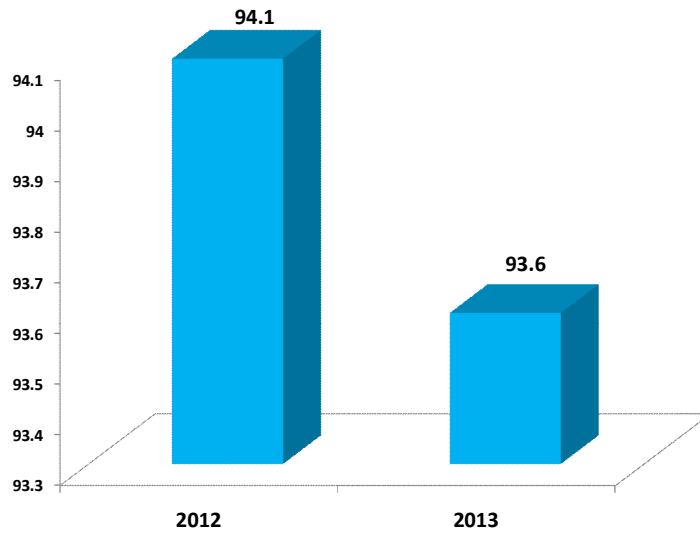
## Transition Rate: (Class VIII to IX)



Source: UDISE.

6

## Pass Percentage Class X



Source: UDISE.

6

**Spill Over**

₹In lakh

S.No.	Activities	Cumulative Approved outlay		Cumulative Progress till 31st March			Spill Over
		Phy	Fin	Phy	Fin	% Fin	Fin
<b>A</b>	<b>Non recurring</b>						
<b>1</b>	<b>New Schools</b>						
1.01	1 section school	7	328.02	5	203.7	62.10	124.32
1.02	2 section school	4	232.48	4	180.28	77.55	52.20
	<b>Sub total</b>	<b>11</b>	<b>560.50</b>	<b>9.00</b>	<b>383.98</b>	<b>68.51</b>	<b>176.52</b>
<b>2</b>	<b>Strengthening of existing Govt school</b>						
2.01	Additional Classroom	22	123.86	22	123.86	100.00	0.00
2.02	Integrated Science Lab	74	482.55	29	176.90	36.66	305.65
2.03	Lab equipments	74	74.00	48	48.00	64.86	26.00
2.04	Computer Room	57	301.65	29	145.00	48.07	156.65
2.05	Library	69	487.72	29	203.00	41.62	284.72
2.06	Art and Craft room	67	362.75	28	136.50	37.63	226.25
2.07	Toilet block	32	32.00	0	0	0	32.00
2.08	Water facility	24	12.00	0	0	0	12.00
	<b>Sub total</b>	<b>419</b>	<b>1876.53</b>	<b>185</b>	<b>833.26</b>	<b>44.40</b>	<b>1043.27</b>
<b>3</b>	<b>ICT @school</b>						
5.01	Hardware and others support	105	672.00	0	0	0	672.00
	<b>Sub total</b>	<b>105</b>	<b>672.00</b>	<b>0</b>	<b>0</b>	<b>00</b>	<b>672.00</b>
	<b>TOTAL Non-recurring</b>		<b>3109.03</b>		<b>1217.24</b>		<b>1891.79</b>

## UT: Puducherry

₹In lakh

S.No	Activity	Approved for 2015-16		
		Unit cost	Phy	Fin
<b>A</b>	<b>Recurring</b>			
<b>1</b>	<b>Teachers Salary</b>			
1.1	Subject teacher(12 months)	0.35	24	100.80
	<b>Sub total</b>			<b>100.80</b>
<b>2</b>	<b>Training</b>			
2.1	In-service training for existing teachers including teaching HMs	0.03	437	13.11
2.2	Training of KRPs	0.015	20	0.30
2.3	Training of Master Resource Persons	0.015	40	0.60
2.4	Professional Development Program of Head Master	0.048	50	2.40
2.5	Environment Building programme (IEDSS)	0.10	6	0.60
2.6	Training of Educational Administrators	0.009	40	0.36
	<b>Sub total</b>			<b>17.37</b>
<b>3</b>	<b>Recurring Grants</b>			
3.1	School Grant	0.50	130	65.00
3.2	Student oriented Activities (including assistance and equipments) (IEDSS)	0.03	268	8.04
	<b>Subtotal</b>			<b>73.04</b>
	<b>Recurring Total (A)</b>			<b>191.21</b>
	<b>New Components approved for 2015-16</b>			
<b>B</b>	<b>Recurring</b>			
<b>4</b>	<b>Project A (Focus on Science and Math)</b>			
4.1	In service training to Science and Maths Teachers	0.03	247	7.41
4.2	Science Exhibition at District level	1.00	2	2.00
4.3	Educational trip outside the UT	0.02	1000	20.00
4.4	Special coaching for Learning enhancement	0.005	2158	10.79
	<b>Sub total</b>			<b>40.20</b>
<b>5</b>	<b>Promotion of Art and Culture</b>			
5.1	Kala Utsav/Talent Search			6.00
5.2	Science Exhibition at School level including Art & Craft			
5.3	Self Defence training for girls	0.03	109	9.81
	<b>Sub total</b>			<b>15.81</b>
	<b>Total Reurring (B)</b>			<b>56.01</b>
	<b>Total Recurring (A+B)</b>			<b>247.22</b>
	<a href="#">MMER@5%</a>			<b>12.36</b>
	<b>Total Recurring (A+B+MMER)</b>			<b>259.58</b>
	<b>Total approved outlay</b>			<b>259.58</b>

\*Recurring grants will be lapsed on 31<sup>st</sup> March, 2016.

Components not recommended							
<b>Non Recurring</b>							
<b>New Schools</b>							
1 section school	85.71	1	85.71			0.00	Proposed school already upgraded by UT. Hence not considered
<b>Sub total</b>		<b>1</b>	<b>85.71</b>		<b>0</b>	<b>0.00</b>	
<b>Sub total</b>	<b>6.40</b>	<b>132</b>	<b>844.80</b>	<b>0.00</b>	<b>0</b>	<b>0.00</b>	
<b>TOTAL Non-recurring</b>			<b>930.51</b>			<b>0.00</b>	
<b>Recurring</b>							
Minor Repair (Gov. Schools)	0.25	126	31.50			0.00	UT Gov may bear this fund
Salary (New Special Educators)	1.80	12	21.60			0.00	Not considered since no teachers are in position
Art and Craft Exhibition at District level	1	2	2.00			0.00	To be Converged with Kala Utsav
Global Awareness and Quiz programme	0.01	130	1.30			0.00	UT to converge with School grants or from its own fund
Exposure visit with in UT	0.003	19300	57.90			0.00	Not be Considered as priority needs to be given for achieving actual learning outcomes in education
<b>Puducherry –RMSA-2015-16</b>							<b>Page 15</b>

Recurring support for ICT 132 schools	2.7	132	356.40			0.00	Not considered fresh schools since 169 schools not started and discrepancies in 52 schools out of total 380 previously approved schools
Monitoring	0.02	130	2.60			0.00	To be met from MMER fund
Evaluation	5	1	5.00			0.00	
<b>Sub total</b>			<b>478.30</b>			<b>0.00</b>	
<b>TOTAL Recurring</b>			<b>161.03</b>			<b>0.00</b>	



**Note for promotion of Performing Arts in Secondary Schools and showcasing as a national annual event – Kala Utsav**

RashtriyaMadhyamikShiksha Mission recognizes the importance of aesthetics and artistic experiences for secondary level children, especially in view of the role that such experiences can play in creating awareness of India's cultural heritage and its vibrant diversity.

In the context of education of arts (music, theatre, visual arts and dance) and heritage crafts, the Mission is guided by the recommendations of the National Focus Groups on these subjects and the report of the CAFE Committee on Culture. The syllabus for arts developed by NCERT should be followed and teachers who have been appropriately trained should be appointed for art education. Art is to be treated as a part of the curriculum and not as an extra-curricular activity. As recommended by NCF-2005, art education must become both a tool for the enrichment of learning in all subjects, and also as a subject in its own which is taught in every school up to class X and facilities for the same may be provided in every school. (RMSA Framework)

Performing arts have a key place in this context, especially when there is an attempt to bring together the mind and the body, aesthetically while imbibing and carrying forward the rich and great art forms of this diverse country.

In the six years of RMSA implementation, few States/UTs have been organizing Annual Art and Literary Competitions and Festivals at the School, District and State/UT level. Such an initiative in Kerala (Kalloltasavam), includes promotion of Classical Dance forms of Kuchipuddi, Monhiniattam, kathakali, Bharatnatyam, as well as traditional performing arts like Thiruvathirakali, Oppana, Margamkali, Yakshaganam, Instrumental classical and folk music, etc. In addition, literary activities like Story Writing, Art Competition (Drawing and Painting) are also held, in which outstanding and high quality performances are selected for competing at a higher level, ending with the selection of the best performances at the State/UT level during the week long School Art Festival.

**Kala Utsav :**

With the objective of encouraging such initiatives across all States/UTs and to promote and showcasing such promising talents at the National stage, an annual event at the National level, Kala Utsavis proposed to be organised. The event shall focus on performing arts ó dance, music and theatre.

This event will be the culmination of activities that will begin with schools conducting and identifying talents to represent it at District level, and the District to the State/UT.

The shortlisted schools will represent States/UTs at the National event and exhibit their talent in three main art forms: Dance, Music and Theatre. Since it is a school based activity, focus and preference will be for group presentations, over individual talents.

**Implementation**

As part of the RMSA interventions, States/UTs shall be supported (through NCERT), in

- (i) Organizing, and managing activities including competitions at the district and State/UT level
- (ii) Develop, nurture and showcase such talents in Govt. Secondary and Higher Secondary Schools
- (iii) The District/State/UT/National competition may be structured as a performing art festival which include workshops, live performances etc.

### **KALASHAALA SAMMAN**

Annual KALA UTSAV to be held preferably in January would entail States/UTs planning their calendar of events accordingly so that they work towards short listing entries to national event by November of every Year. Since this would need continuous support and follow up NCERT would anchor this event as a project under the RMSA, and all funds earmarked for this can be transferred to NCERT for coordination with States/UTs.(similar to National Science Exhibition that NCERT coordinates.)

Each winning State/UT School will be awarded Rs 5 lakhs for First prize, Rs 3 Lakhs for Second prize and Rs. 2 lakhs for Third prize. The award categories shall include (i) innovative acts, (ii) endangered / dying art form, (iii) performance by especially abled students among other categories of arts. The prize will also recognize the students and teachers who have demonstrated outstanding achievement in the areas. The national prize shall include a short summer workshop at premier institution under tutelage of leading artist for winning performers in addition to monetary prizes.

At the State/UT level, Rs. One lakh would be allocated to be given away to the Best School in Performing Arts during the year.

The School would decide how to award the students and teacher/s in recognition of their achievement and effort.

### **Selection**

The initial selection shall be made at the District level by a District Committee from amongst the schools selected by the District Committee, on the parameters outlined. The parameters for number of entries at each level, winning entries / eligibility of schools etc. are being worked out by NCERT and shall be shared with the States / UTs shortly.

The State/UT Selection Committee shall scrutinize and shift the recommendations of the District Committee and select the schools from among the selected/recommended schools sent by the Districts for the State/UT level Award and the State/UT entry to the Central Selection Committee for further consideration for National level Award.

The State/UT Level Committee may consist of the Commissioner/ Director of Education or Commissioner/ Director of Public Instructions as Chairman, Head of SCERT as Member Secretary, and an Expert / Experts as Member/ Members. The Secretary (Secondary

Education) will scrutinize the selection and forward the same to Department of Art Education, NCERT, New Delhi.

NCERT, New Delhi, will organize a National Level School Art Festival, which would serve as a forum to show case the short listed entries/ performance and from which the Selection Committee / Jury would then select the winners.

The composition of the Committee will be as follows:

Chairman Director NCERT

Expert Members (3) (Music, Dance, Theatre) (to be finalized by director NCERT) Head, Department of Art Education, NCERT ó

Member Secretary

**Financial implication:**

State/UT support will be provided as part of Annual Plan proposal and under Quality interventions. Arts & Crafts is an existent item of intervention, where States/UTs have been provided funds for similar activities. This year States/UTs shall be requested to ensure that this is incorporated in their Annual proposals.

The total projected cost at national level would be around Rs. 1.00 Crore. As per details given below:

(i)	State/UT level Award for Best School @Rs 1 lakh per State/ UT (Allocation to State/UT)	36.00
(ii)	Advertisement announcing the competition (Allocation to NCERT)	3.00
(iii)	Pre ó Contest Activities	3.00
(iv)	Expenditure by the Selection Committee (Allocation to NCERT)	2.00
(v)	To and fro fare by train and boarding and lodging for Students / teachers of shortlisted schools (entries) ( Allocation to NCERT)	40.00
(vi)	Cost of the Three Prizes @ Rs 5 lakhs, Rs 3 lakhs and Rs 2 lakhs, to be given as award (Allocation to NCERT)	10.00
(vii)	Cost of booking of venue (Allocation to NCERT)	2.00
(viii)	Misc. expenditure (cost of printing certificates, etc) Allocation to NCERT)	4.00
<b>Total</b>		<b>1.00</b>

## List of 105 ICT Schools, Puducherry

Sl. No.	District	Block	Village	School Code	School Name	School Management	School Category
1	PUDUCHERRY	340201	340201016	34020101606	PANDIT DURAISAMY GHS-PETICHETPET	Government	HIGH
2	PUDUCHERRY	340201	340201023	34020102303	S.R.SUBRAMANIAN GHS-SARAM	Government	HIGH
3	PUDUCHERRY	340201	340201025	34020102505	THILLAIYADI VALLIAMMAI GHS- KADIRKAMAM	Government	HIGH
4	PUDUCHERRY	340201	340201038	34020103802	GHS-KOMBAKKAM	Government	HIGH
5	PUDUCHERRY	340201	340201111	34020111102	MTVS GHS - REDDIARPALAYAM	Government	HIGH
6	PUDUCHERRY	340201	340201123	34020112302	GHS (SUBBIAH NAGAR) THATTANCHAVADY	Government	HIGH
7	PUDUCHERRY	340201	340201123	34020112304	GHS-GANDHI NAGAR	Government	HIGH
8	PUDUCHERRY	340201	340201059	34020105902	GHS-THENGAITHITTU	Government	HIGH
9	PUDUCHERRY	340202	340202074	34020207403	GHS- KEEZHPARIKALPET	Government	HIGH
10	PUDUCHERRY	340203	340203066	34020306604	GHS--MADAGADIPET - PALAYAM	Government	HIGH
11	PUDUCHERRY	340201	340201123	34020112312	GHS- METTUPALAYAM	Government	HIGH
12	PUDUCHERRY	340201	340201128	34020112801	T.T.T.VI.KA GHS- SAVARIRAYALU STREET	Government	HIGH
13	PUDUCHERRY	340201	340201128	34020112827	SAVARAYALUNAYAG AR GGHS- PUDUCHERRY	Government	HIGH
14	PUDUCHERRY	340201	340201128	34020112839	PERUNTHA. KAMARAJ GBHS- MUTHIALPET	Government	HIGH
15	PUDUCHERRY	340201	340201128	34020112865	DGHS- VAMBAKEERAPALAY AM	Government	HIGH
16	PUDUCHERRY	340201	340201128	34020112871	PENSIONNAT DE JEUNES FILLES, DUMAS STREET	Government	HIGH
17	PUDUCHERRY	340201	340201128	34020112873	VEERAMAMUNIVAR GBHS-PONDICHERRY	Government	HIGH
18	PUDUCHERRY	340201	340201128	34020112874	D.SIMON CARDINAL GGHS MISSION ST	Government	HIGH
19	PUDUCHERRY	340201	340201128	34020112875	CALVE COLLEGE FRENCH HIGH SCHOOL-MISSION STREET	Government	HIGH
20	PUDUCHERRY	340201	340201138	34020113818	GHS-DHARMAPURI	Government	HIGH

21	PUDUCHERRY	340202	340202007	34020200701	GHS-ARIANKUPPAM	Government	HIGH
22	PUDUCHERRY	340202	340202007	34020200717	SCSVGHS-VEERAMPATTINAM	Government	HIGH
23	PUDUCHERRY	340202	340202025	34020202505	GHS-PANITHITTU	Government	HIGH
24	PUDUCHERRY	340201	340201128	34020112863	NSC BOSE GHS-PERIYAR NAGAR	Government	HIGH
25	PUDUCHERRY	340202	340202031	34020203102	GHS-KURUVINATHAM	Government	HIGH
26	PUDUCHERRY	340202	340202032	34020203203	GOVT. GIRLS HIGH SCH-MADUCARAI	Government	HIGH
27	PUDUCHERRY	340202	340202050	34020205003	GHS-KALMANDAPAM	Government	HIGH
28	PUDUCHERRY	340203	340203029	34020302910	GHS-THIRUKKANUR	Government	HIGH
29	PUDUCHERRY	340203	340203033	34020303303	TVK GHS-ARUMBARTHAPURAM	Government	HIGH
30	PUDUCHERRY	340203	340203037	34020303702	GHS PILLAYARKUPPAM	Government	HIGH
31	PUDUCHERRY	340203	340203041	34020304101	GHS-SANTHAI PUDUKUPPAM	Government	HIGH
32	PUDUCHERRY	340203	340203057	34020305701	GHS-URUVAIYAR	Government	HIGH
33	PUDUCHERRY	340203	340203060	34020306001	GHS-VADHANUR	Government	HIGH
34	PUDUCHERRY	340203	340203062	34020306219	GHS-KANUVAPET	Government	HIGH
35	PUDUCHERRY	340203	340203069	34020306901	GHS SUTHUKENI	Government	HIGH
36	PUDUCHERRY	340203	340203053	34020305302	GHS-THIRUBUVANAI	Government	HIGH
37	PUDUCHERRY	340203	340203043	34020304301	GHS-SELLIPET	Government	HIGH
38	PUDUCHERRY	340203	340203048	34020304802	GHS-SORAPET	Government	HIGH
39	PUDUCHERRY	340203	340203067	34020306701	GHS-KODATHUR	Government	HIGH
40	PUDUCHERRY	340201	340201006	34020100610	JEEVANANDAM GHSS-KARAMANIKUPPAM	Government	HR. SEC.
41	PUDUCHERRY	340201	340201016	34020101616	NAVALAR NED. HSS-LAWSPET	Government	HR. SEC.
42	PUDUCHERRY	340201	340201016	34020101619	VALLALAR GGHSS-LAWSPET	Government	HR. SEC.
43	PUDUCHERRY	340201	340201025	34020102506	GGHSS-KATHIRKAMAM	Government	HR. SEC.
44	PUDUCHERRY	340201	340201030	34020103002	THEERAR SATHIYAMOORTHY GHSS-MURUNGAPAKKAM	Government	HR. SEC.
45	PUDUCHERRY	340201	340201049	34020104902	GHSS-OULGARET	Government	HR. SEC.
46	PUDUCHERRY	340201	340201123	34020112310	INDIRA GANDHI GHSS-INDIRA NAGAR	Government	HR. SEC.

47	PUDUCHERRY	340201	340201128	34020112802	VOC GHSS-MISSION STREET	Government	HR. SEC.
48	PUDUCHERRY	340201	340201128	34020112829	THIRUVALLUR GOVT GIRLS HSS-PONDY	Government	HR. SEC.
49	PUDUCHERRY	340201	340201128	34020112836	SRI.N.K.C. GGHSS-KURUSUKUPPAM	Government	HR. SEC.
50	PUDUCHERRY	340201	340201128	34020112845	SINNATHA GOVT GIRLS HSS-MUTHIALPET	Government	HR. SEC.
51	PUDUCHERRY	340201	340201128	34020112851	SOUCILABAI GOVT.GIRLS HSS-VISYAL ST	Government	HR. SEC.
52	PUDUCHERRY	340201	340201128	34020112867	SUBRAMANIA BHARATHI GGHSS-L. B . SHASTRI ST., PONDY	Government	HR. SEC.
53	PUDUCHERRY	340201	340201128	34020112876	CALVE COLLEGE GHSS-MISSION ST.	Government	HR. SEC.
54	PUDUCHERRY	340201	340201128	34020112881	MANIMEGALAI GGHSS-NELLITHOPE	Government	HR. SEC.
55	PUDUCHERRY	340201	340201128	34020112883	ANNAI SIVAGAMI GGHSS-MUDALIARPET	Government	HR. SEC.
56	PUDUCHERRY	340201	340201138	34020113806	IAGHSS-MUTHIRARPALAYAM	Government	HR. SEC.
57	PUDUCHERRY	340202	340202010	34020201003	BHARATHI GHSS-BAHOUR	Government	HR. SEC.
58	PUDUCHERRY	340202	340202022	34020202202	GHS-KARIKALAMPAKKAM	Government	HR. SEC.
59	PUDUCHERRY	340202	340202025	34020202503	DR.B.R.AMBEDKAR GHSS-KIRUMAMPAKKAM	Government	HR. SEC.
60	PUDUCHERRY	340202	340202027	34020202701	GHSS - KORKADU	Government	HR. SEC.
61	PUDUCHERRY	340202	340202037	34020203702	GHSS-NONANKUPPAM	Government	HR. SEC.
62	PUDUCHERRY	340201	340201015	34020101502	GGHS-KALAPET	Government	HR. SEC.
63	PUDUCHERRY	340202	340202075	34020207502	TKRSP GHSS-KORAVELIMEDU	Government	HR. SEC.
64	PUDUCHERRY	340203	340203019	34020301901	GHSS-KOODAPAKKAM	Government	HR. SEC.
65	PUDUCHERRY	340203	340203020	34020302002	ARINGAR ANNA GHSS-KUNICHEMPET	Government	HR. SEC.
66	PUDUCHERRY	340203	340203042	34020304205	GHSS-SEDARAPET	Government	HR. SEC.
67	PUDUCHERRY	340203	340203055	34020305503	ADGHSS-THONDAMANATHAM	Government	HR. SEC.
68	PUDUCHERRY	340203	340203062	34020306203	VGBHSS-VILLIANUR	Government	HR. SEC.
69	PUDUCHERRY	340203	340203062	34020306217	KQMGHSS-SULTHANPET	Government	HR. SEC.
70	KARAIKAL	340406	340406001	34040600102	KAMARAJ GHS-POOVAM	Government	HIGH
71	KARAIKAL	340406	340406004	34040600401	GHS-THIRUVETTAKKUDY	Government	HIGH

72	KARAIKAL	340406	340406013	34040601303	C E S DEITHA STREET, KARAIKAL	Government	HIGH
73	KARAIKAL	340406	340406015	34040601502	GHS KOVILPATHU	Government	HIGH
74	KARAIKAL	340406	340406077	34040607705	RM ASP GOVT HS KARAIKALMEDU	Government	HIGH
75	KARAIKAL	340406	340406108	34040610804	HUSSAINIA HIGH SCH. NERAVY	Government	HIGH
76	KARAIKAL	340406	340406120	34040612001	KKGHS- KURUMBAGARAM	Government	HIGH
77	KARAIKAL	340406	340406124	34040612402	GGHS - T.R.PATTINAM	Government	HIGH
78	KARAIKAL	340406	340406126	34040612605	KAMARAJ GHS VADAMARAICADU	Government	HIGH
79	KARAIKAL	340406	340406126	34040612614	GHS-KOTHUKULAM	Government	HIGH
80	KARAIKAL	340406	340406126	34040612615	MA GOVT GIRLS HIGH SCHOOL	Government	HIGH
81	KARAIKAL	340406	340406126	34040612616	GP GOVT HIGH SCHOOL	Government	HIGH
82	KARAIKAL	340406	340406126	34040612619	GOVT HIGH SCHOOL AKKARAIVATTAM	Government	HIGH
83	KARAIKAL	340406	340406128	34040612803	GOVT. HIGH SCHOOL. OOZHAPATHU	Government	HIGH
84	KARAIKAL	340406	340406130	34040613002	GHS-VARICHIDUDY	Government	HIGH
85	KARAIKAL	340406	340406014	34040601402	NSC BOSE GHSS THALATHERU	Government	HR. SEC.
86	KARAIKAL	340406	340406015	34040601504	TP GOVT HS SCHOOL KOVILPATHU	Government	HR. SEC.
87	KARAIKAL	340406	340406077	34040607707	T,G.H.S.S- AMBAGARATHUR	Government	HR. SEC.
88	KARAIKAL	340406	340406087	34040608702	JNGHSS - NEDUNGADU	Government	HR. SEC.
89	KARAIKAL	340406	340406106	34040610606	GOVT. HSS, THENOOR	Government	HR. SEC.
90	KARAIKAL	340406	340406106	34040610608	GOVT. GIRLS H S S, TIRUNALLAR	Government	HR. SEC.
91	KARAIKAL	340406	340406108	34040610810	GHSS- NERAVY	Government	HR. SEC.
92	KARAIKAL	340406	340406126	34040612607	ATGOVT GIRLS HR SEC SCHOOL	Government	HR. SEC.
93	MAHE	340301	340301001	34030100102	ECOLE CENTRALE ET COURS COMPLE	Government	HIGH
94	MAHE	340301	340301004	34030100401	KASTHURBA GANDHI GHS-PALLOOR	Government	HIGH
95	MAHE	340301	340301015	34030101502	U.G.H.S. CHALAKKARA	Government	HR. SEC.
96	MAHE	340301	340301001	34030100101	JAWAHARLAL NEHRU GHSS	Government	HR. SEC.
97	MAHE	340301	340301001	34030100114	C.E. BHARATHAN GHSS-MAHE	Government	HR. SEC.
98	MAHE	340301	340301002	34030100202	I.K. KUMARAN GHSS- PANDAKAL	Government	HR. SEC.
99	MAHE	340301	340301004	34030100405	V.N. PURUSHOTHAMAN	Government	HR. SEC.



					GHSS-PALLOOR		
100	YANAM	340101	340101001	34010100102	PANDIT JAWAHARLAL NEHRU GOVT. H S - METTAKUR	Government	HIGH
101	YANAM	340101	340101002	34010100203	KAMALA NEHRU GOVT. GIRLS HIGH SCHOOL - YANAM	Government	HIGH
102	YANAM	340101	340101002	34010100212	MAHATMA GANDHI GOVT. BOYS HIGH SCHOOL - YANAM	Government	HIGH
103	YANAM	340101	340101002	34010100213	RAJIV GANDHI GOVT. ENG. MED. HIGH SCHOOL - YANAM	Government	HIGH
104	YANAM	340101	340101003	34010100304	DR. B.R. AMBEDKAR GOVT. HIGH SCHOOL - FARAMPETA	Government	HIGH
105	YANAM	340101	340101007	34010100701	PERUNTHALAIVAR KAMARAJAR GOVT. HS - GURIEMPET	Government	HIGH