



NEP 2020 - A GATEWAY TO OPPORTUNITIES

**Re-envisioning Secondary Education to
Achieve 100% GER by 2030**

A Paradigm Shift



- From rote learning to competency-based learning
- From teacher-driven instruction to learner-centric environments
- From examination-focused structures to flexible, formative assessment
- From elitist curriculum to equity-based, inclusive, and multilingual education
- From education as a privilege to education as a fundamental right and empowering force

Curricular Restructuring (5+3+3+4)



- Holistic development
- Multi-disciplinary choices
- Integration of vocational education
- Critical thinking and creativity

Flexibility and Choice

- Choose subjects across disciplines
- Pursue vocational and academic pathways simultaneously
- Align learning with passions, interests, and career aspirations

Multilingual and Mother Tongue Integration

MULTILINGUAL & MOTHER TONGUE INTEGRATION

Language should not be barrier to education

Promotes Mother Tongue or regional languages as medium of instruction

ASSESSMENT REFORMS

- Evaluated on understanding, application, and progress
- Supported through peer/self-assessment tools
- Motivated to learn without fear



- Language should not be a barrier to education.
- Promotes Mother Tongue or regional languages as medium of instruction.

Assessment Reforms

- Evaluated on understanding, application, and progress
- Supported through peer/self-assessment tools
- Motivated to learn without fear

The background features several abstract geometric patterns. On the left, there are vertical blue stripes of varying heights. On the right, there are diagonal blue stripes. In the top right and bottom right corners, there are light blue horizontal stripes. The central text is in a bold, black, sans-serif font.

STRATEGIC INTERVENTIONS TO ACHIEVE 100% GER

Strengthening School Infrastructure



- Build and upgrade secondary schools within safe distances, especially in aspirational districts and tribal belts
- Provide gender-sensitive facilities (e.g., girls' toilets, hostels, sanitary pad availability)
- Ensure internet connectivity and digital access to bridge the urban-rural divide

Empowering Teachers



- Continuous professional development through NISHTHA, DIKSHA, and other platforms
- Orientation in experiential pedagogy, multilingual teaching, and inclusive practices
- Incentivize posting in remote areas, and reduce administrative workload

Enhancing Parental and Community Engagement



- **School Management Committees (SMCs) must include voices from the community**
- **Conduct awareness campaigns on the value of secondary education for girls and underrepresented groups**
- **Engage local leaders, alumni, and NGOs in mentoring and supporting school initiatives**

Targeted Scholarships and Incentives



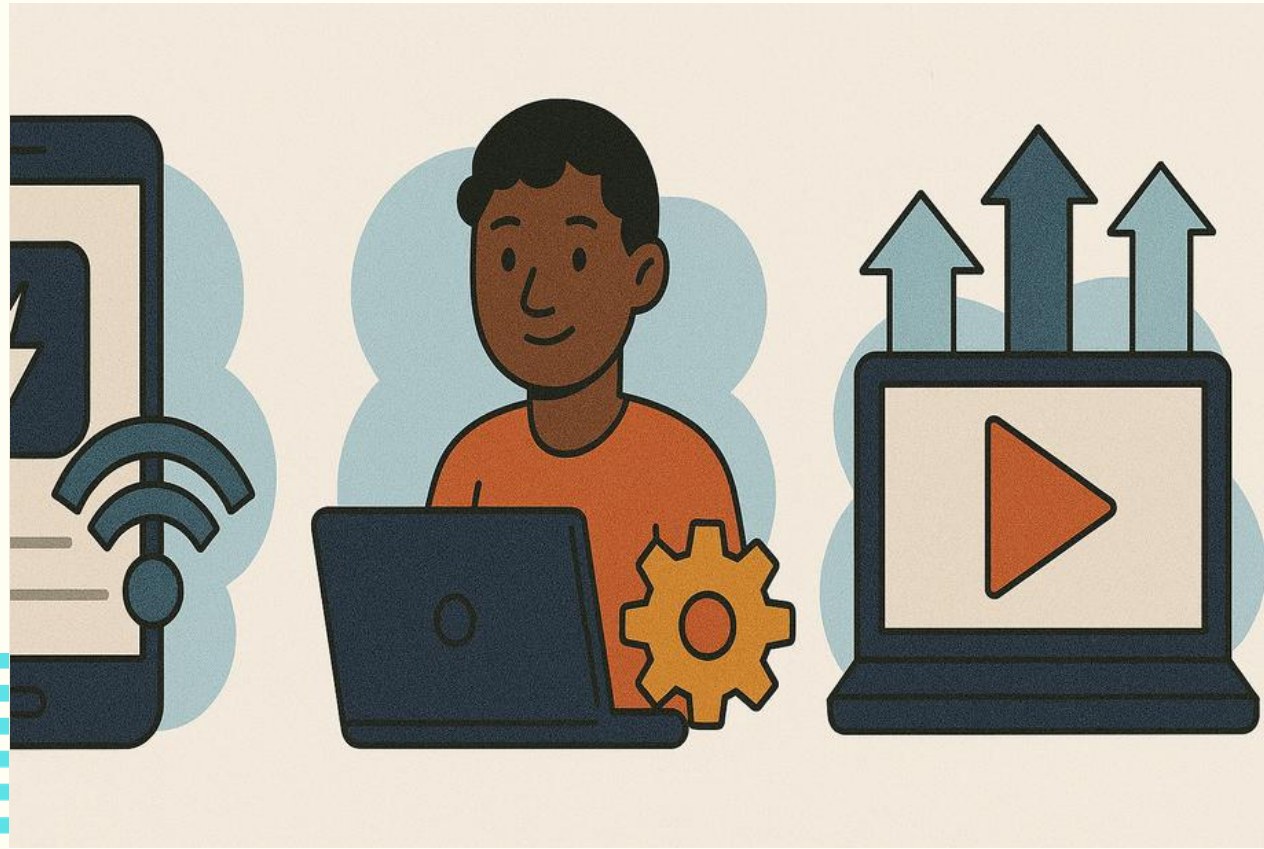
- **Expand conditional cash transfer programs for marginalized learners**
- **Provide direct benefit transfers for uniforms, books, transport**
- **Introduce skill-linked apprenticeships and stipends for vocational learners**

Innovative Schooling Models



- **Strengthen Open and Distance Learning (ODL) through NIOS, state open schools, and online platforms**
- **Promote alternative schooling models for dropouts, working youth, and migrant children**
- **Create cluster schools and digital learning hubs in low-population areas**

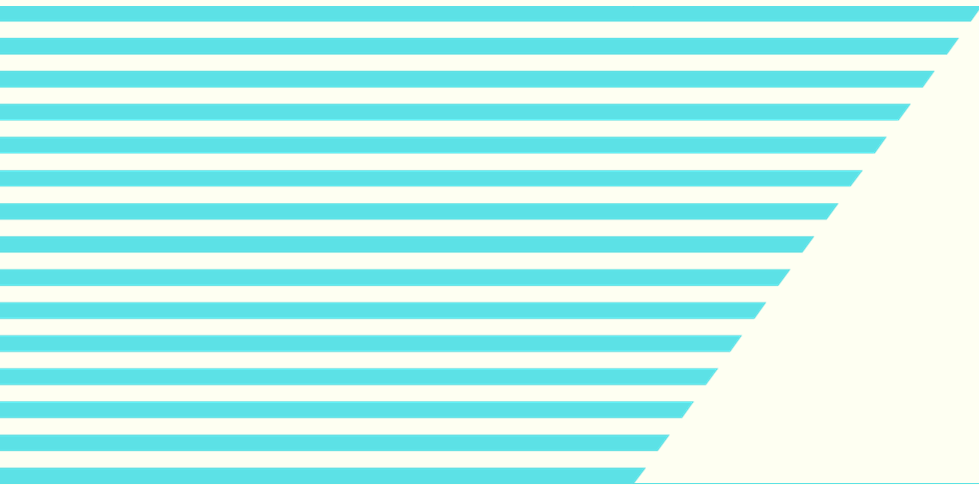
Technology as an Enabler, Not a Barrier



- Bridge the digital divide through smart device distribution, public Wi-Fi, and low-data platforms.
- Develop adaptive learning platforms in multiple languages.
- Use AI-based tools for tracking learning outcomes, predicting dropouts, and customizing interventions.
- Initiatives like PM eVidya, DIKSHA, SWAYAM must be leveraged.

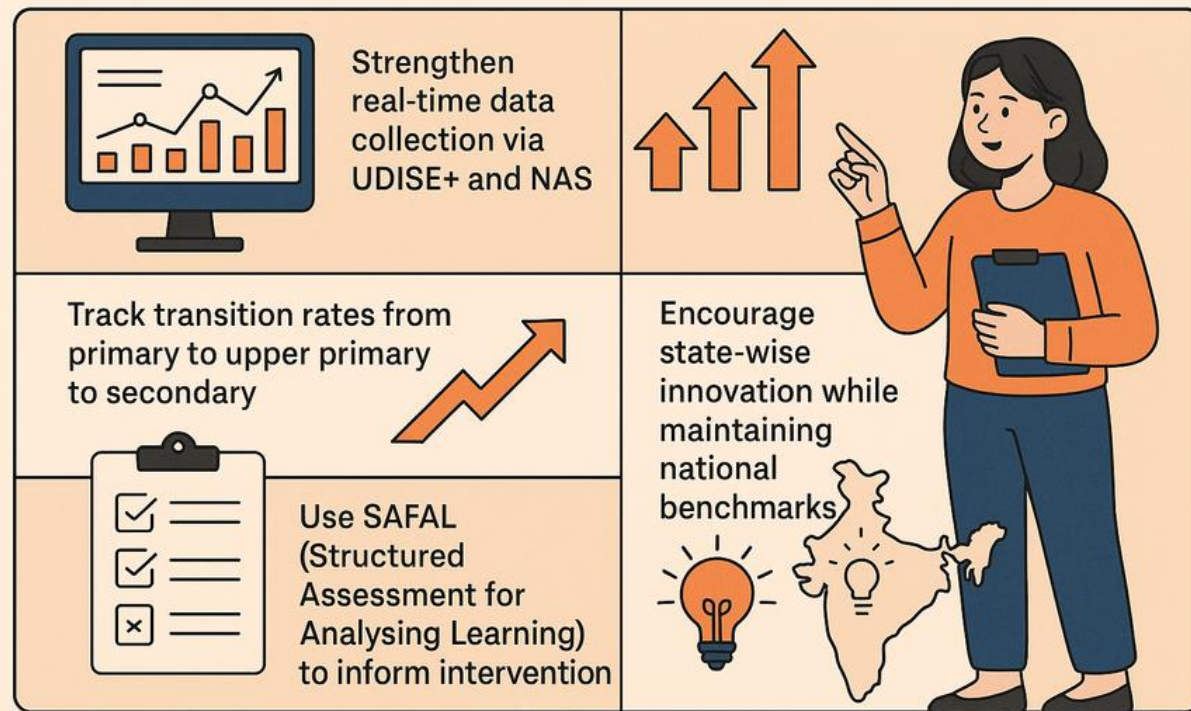
Mental Health and Well-being Support

- **Deploy trained counsellors and wellness teachers.**
- **Integrate socio-emotional learning (SEL) into curriculum.**
- **Establish safe spaces and grievance redressal for bullying, discrimination, or stress.**



Assessment and Monitoring for GER Progress

Assessment and Monitoring for GER Progress



- Strengthen real-time data collection via UDISE+ and NAS
- Track transition rates from primary to upper primary to secondary
- Use SAFAL (Structured Assessment for Analysing Learning) to inform interventions
- Encourage state-wise innovation while maintaining national benchmarks

CONCLUSION :- A Collective Responsibility



- **A promise to every child in India**
- **A mandate for every educator and administrator**
- **A moral obligation for every policymaker**
- **And a call to action for society at large**

The background features a cream-colored base with abstract geometric patterns. On the left, a series of vertical blue stripes of varying heights and widths are arranged in a slightly curved line. On the right, a large circular shape is partially visible, filled with diagonal blue stripes. In the top right corner, there are several horizontal teal stripes. In the bottom left corner, there are diagonal teal stripes. In the bottom right corner, there are horizontal teal stripes. The text "THANK YOU" is centered in a bold, black, sans-serif font.

THANK YOU