



**The BOOT Partner Experience**  
**ICT Conference, MHRD**  
**13th – 14th August, 2013**

*RCM Reddy*

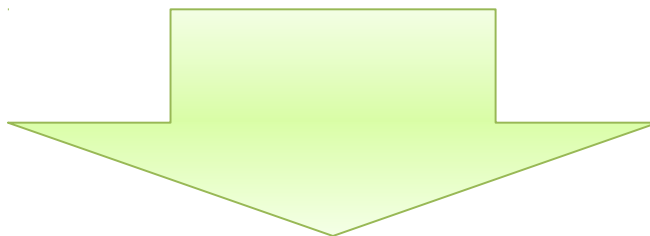


Education • Employability • Employment

# IL&FS EDUCATION AND TECHNOLOGY SERVICES LTD

Part of the IL&FS Group, a leading PPP Infrastructure and  
Financial Services Institution  
[www.ilfsindia.com](http://www.ilfsindia.com)

---



One of the largest Integrated Educational Technology Services  
Provider

Impacting **25,000 Schools (15,000 on BOOT)** and **10 Mn  
Students**

And **1,50,000 Teachers**

[www.iitsets.com](http://www.iitsets.com)

---

# Our Presence in ICT in Education

## Computer Labs under PPP



## K-Yan/K-Class

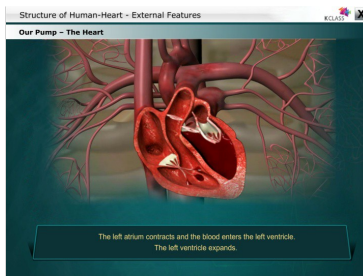
[www.kclass.in](http://www.kclass.in)



## Capacity Building of Teachers



## Digital Educational Resources

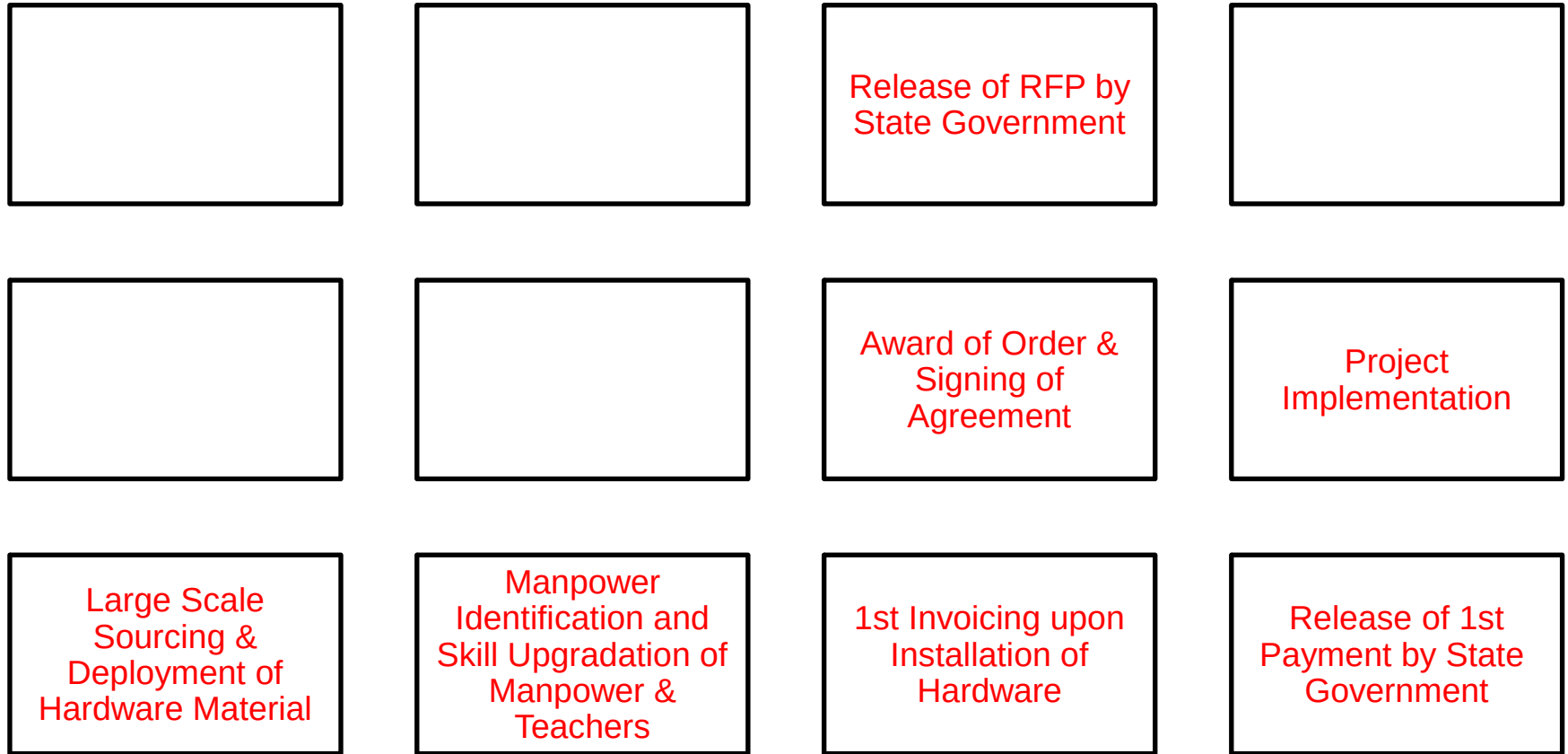


## E-Learning

- Mobile based
  - Web based
- [www.exploriments.com](http://www.exploriments.com)



# LIFECYCLE OF A BOOT PROJECT IN ICT IN EDUCATION

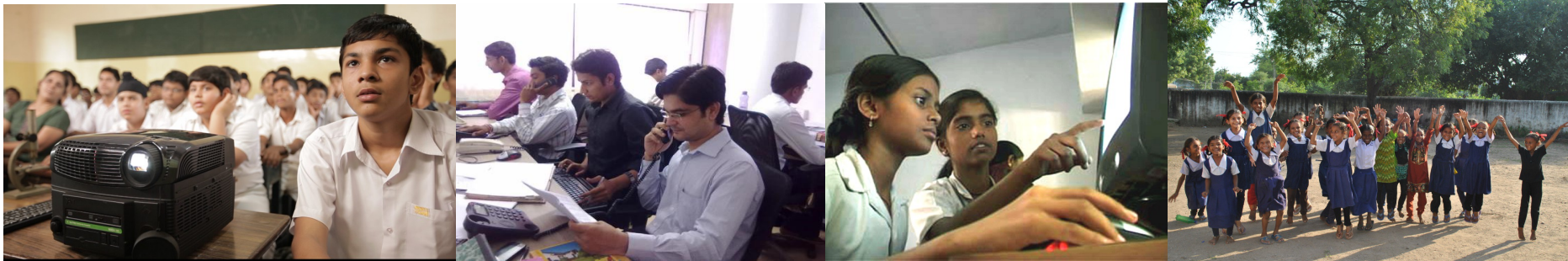


**Being one of the Largest partner in ICT in Education today,  
we would like to further share our experience from the  
BOOT Projects**

Subsequent Invoicing as per Milestones

THE 10-POINT AGENDA

# Experience from boot projects



# Experience from BOOT Projects

## CHALLENGES

- 1 **Contractual:** Absence of a sound Legal and Contractual Framework which mitigates the risk, while ensuring outcomes
- 2 **Financial:** Non-availability and irregular releases of funds, leading to uncertainty
- 3 **Capacity building:** Lack of adequate understanding and capacities of the Scheme and its execution at the state government level
- 4 **Technology:** Lack of standardisation of specs to ensure the most relevant, affordable and versatile technology is deployed

## SUGGESTIONS

- Develop a Model Concession Agreement on the lines of other PPP Infrastructure Projects which identifies and allocated risks and rewards
- Create project specific 'escrow' account in which the GoI and state government funds are deposited, (annually) on signing of contract with the BOOT partner
- Constitute a "Joint Coordination Mechanism" between Centre, State and BOOT Partner, and develop a standard 'tool kit' and training programmes
- Develop a standard specs. Encourage usage of Portable Devices and Cloud based Services

# Experience from BOOT Projects

## CHALLENGES

5 **Power:** Lack of assured power supply leading to higher costs (due to gen sets) and low utilisation of ICT infrastructure

6 **Internet connectivity:** Absence of reliable and faster internet connectivity

7 **Teacher training:** Inadequate focus on building the capacities of the teachers to handle ICT

## SUGGESTIONS

Develop a customised solution with solar power.

Combine with Ministry of New and Renewable Energy schemes to reduce the cost

Engagements with National Optical Fibre Network (NOFN)

Exclusive/Significant percentage of funds to be allocated for teacher training

# Experience from BOOT Projects

## CHALLENGES

## SUGGESTIONS

8 **Under utilisation of ICT Lab potential:** Just confined to what is prescribed in tender. The potential is underutilised

9 **Impact assessment:** Absence of a Logical and Reasonable Impact Assessment Framework

10 **Static scheme structure:** Scheme is not dynamic to capture the emerging technology developments , market requirements and educational needs

Use of ICT Labs as “ Community Learning Centres”.

Convergence with other initiatives for skill development, health education. community education, farmers services etc. Will greatly help in bonding the community with the School

Establish a Simple, Measurable Framework which is directly relatable to the scheme

Freshlook at the Scheme with respect to tech specs, funding pattern, partnership with BOOT players, coordination mechanism etc .

Constitution of a national level consultation group, and periodical review of the Scheme

**Thank You**



Education • Employability • Employment

[www.ilfsets.com](http://www.ilfsets.com)   [www.isdc.in](http://www.isdc.in)   [www.ilfsclusters.com](http://www.ilfsclusters.com)